

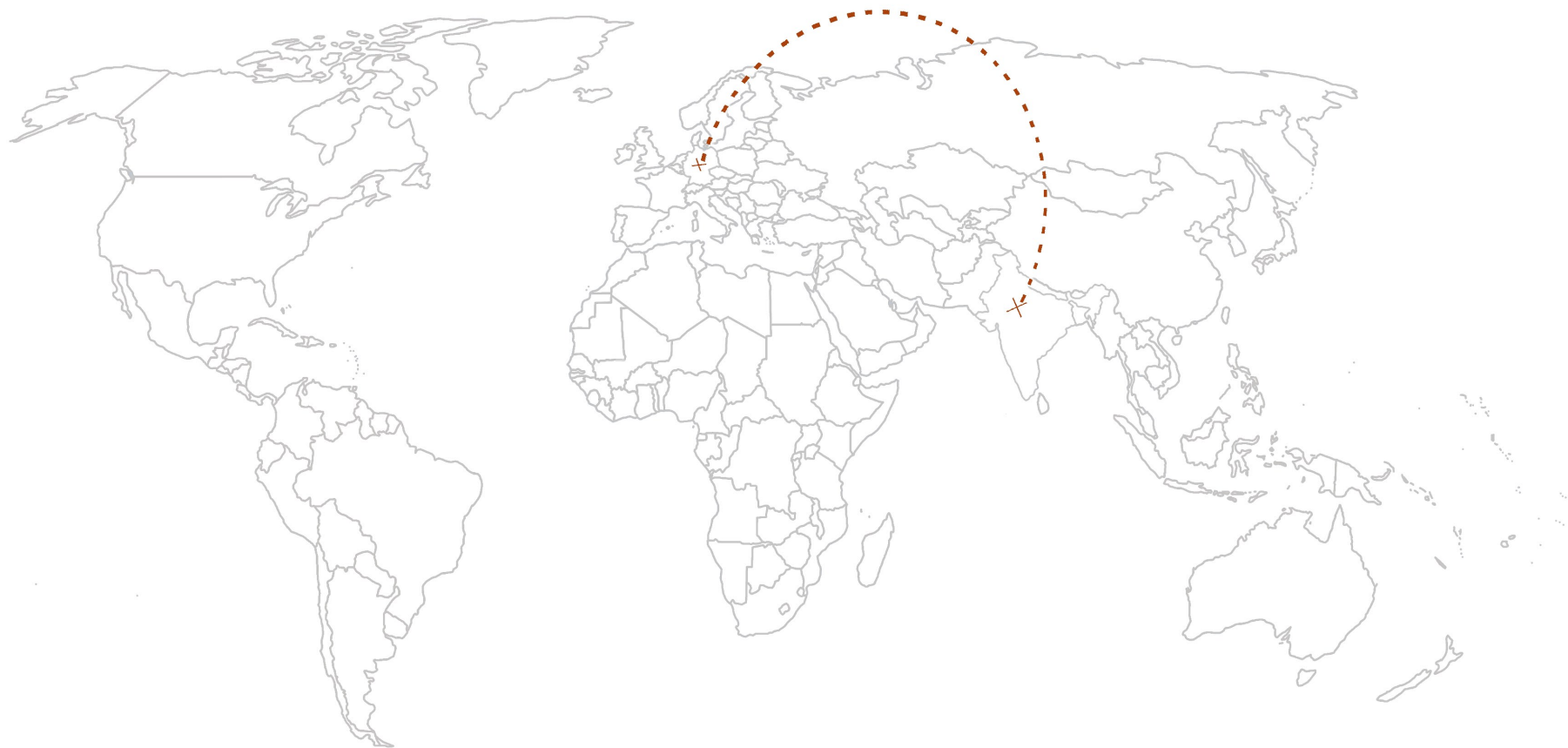
CAMPUS VYAAPAAR

INDIA

I. BASICS

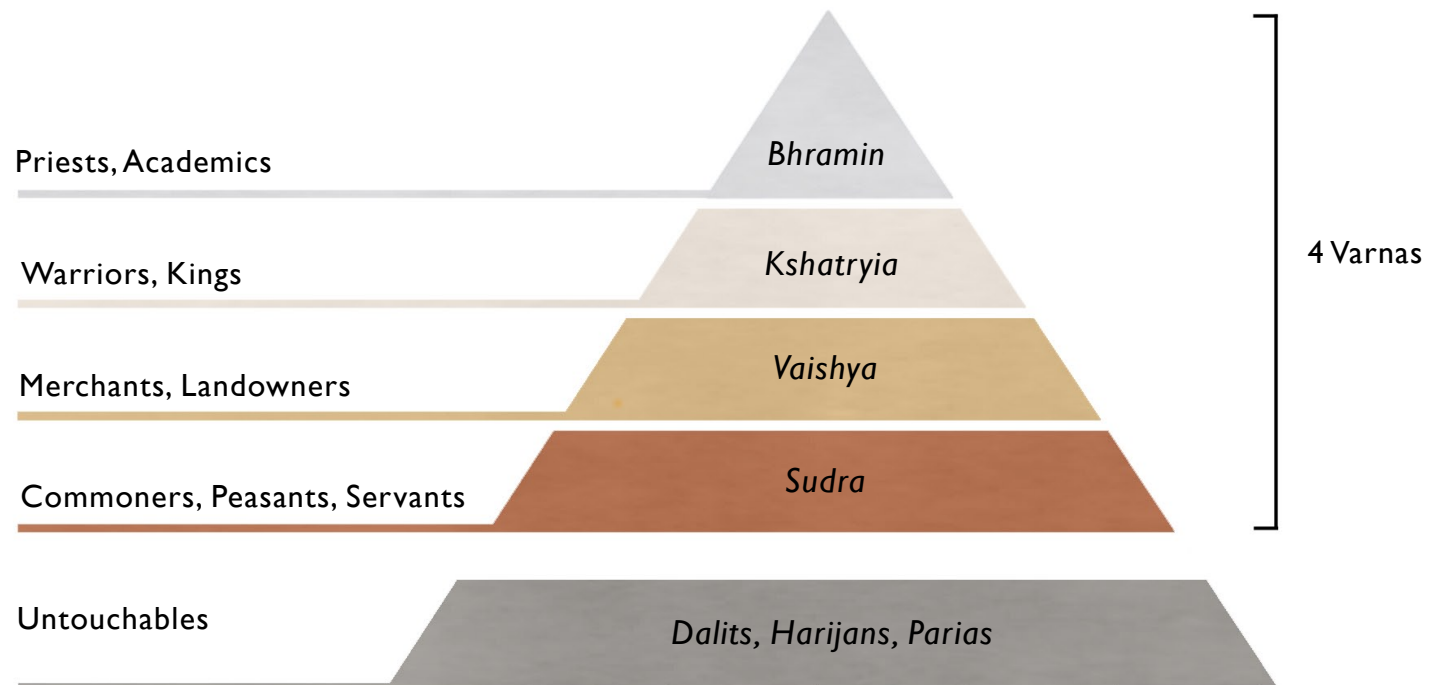
I. BASICS

INDIENHILFE DEUTSCHLAND E.V. AND SOCIETY OF PILAR



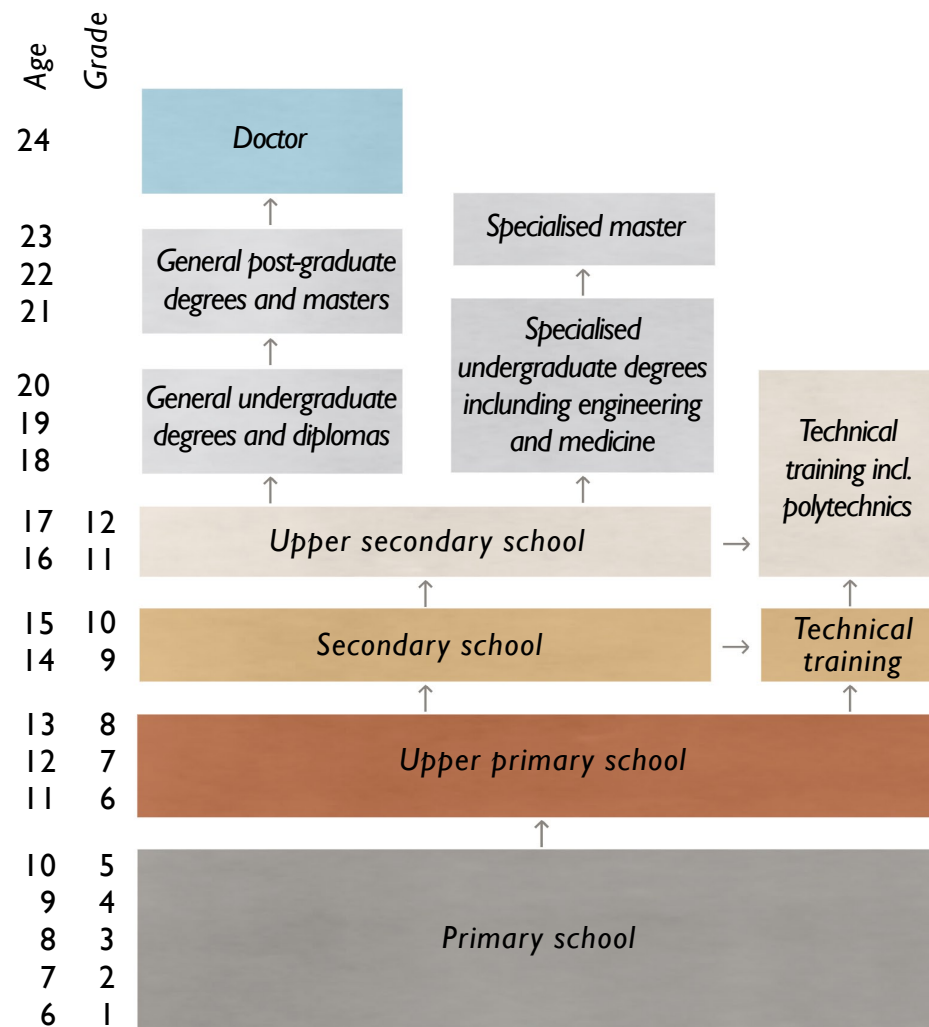
I. BASICS

CAST SYSTEM



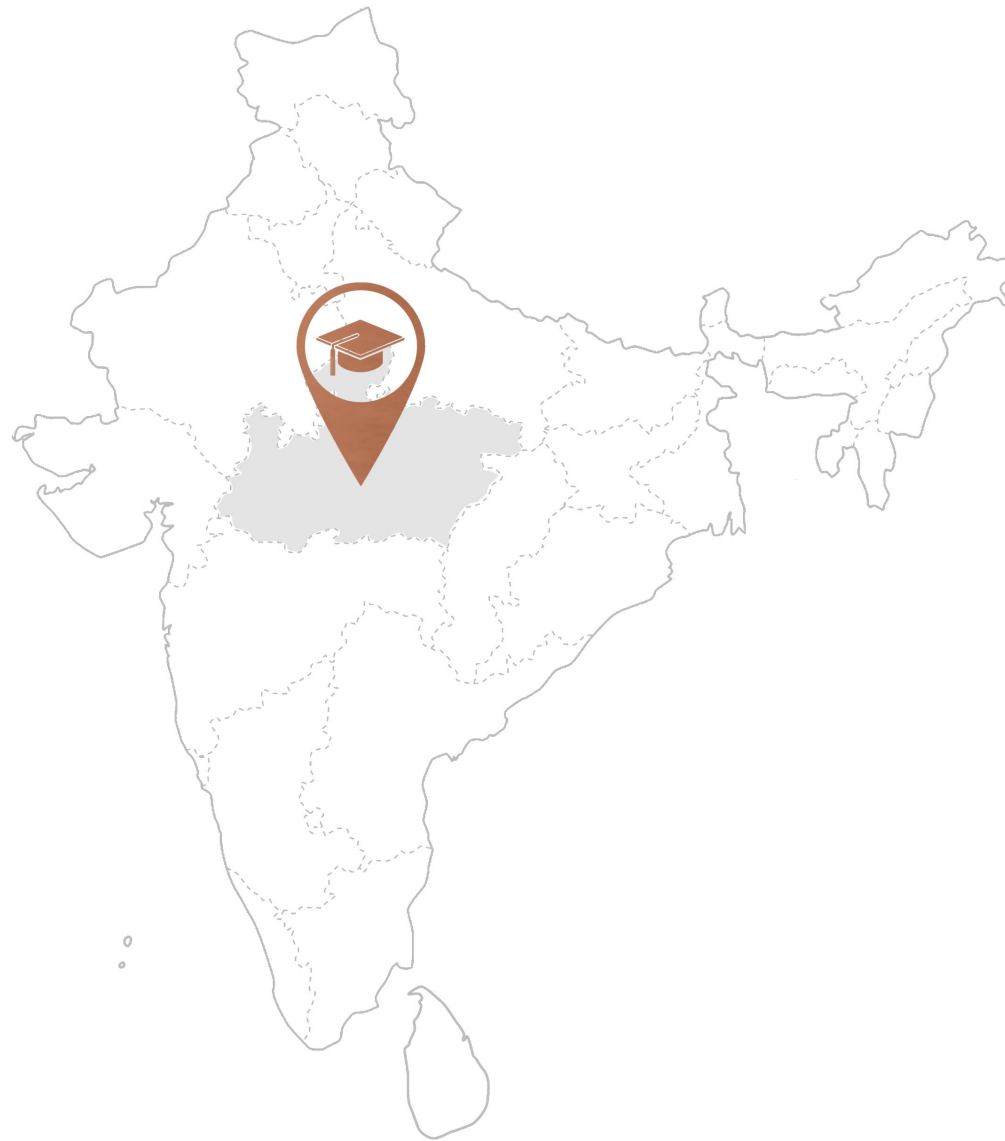
1. BASICS

SCHOOL SYSTEM



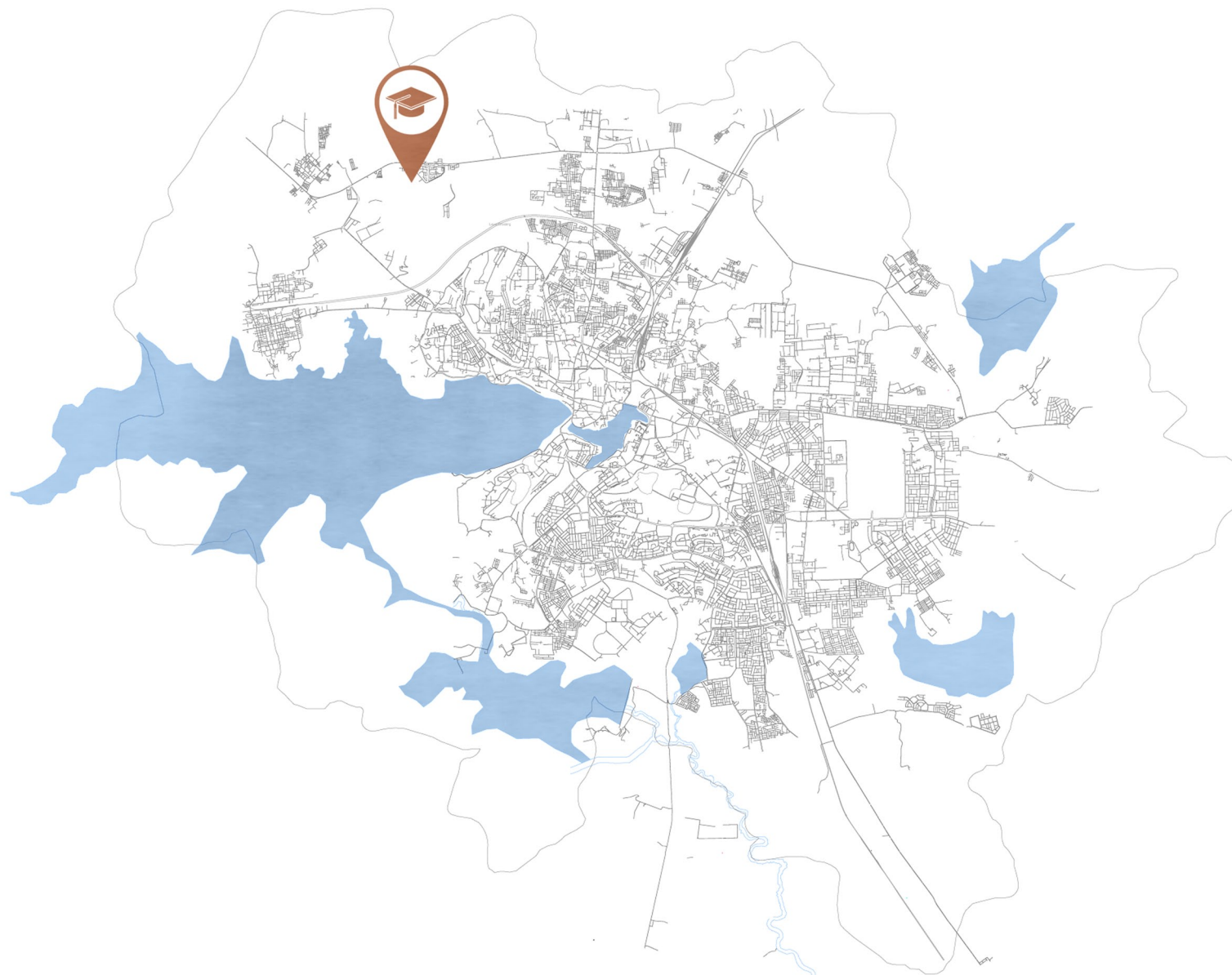
I. **BASICS**

LOCATION



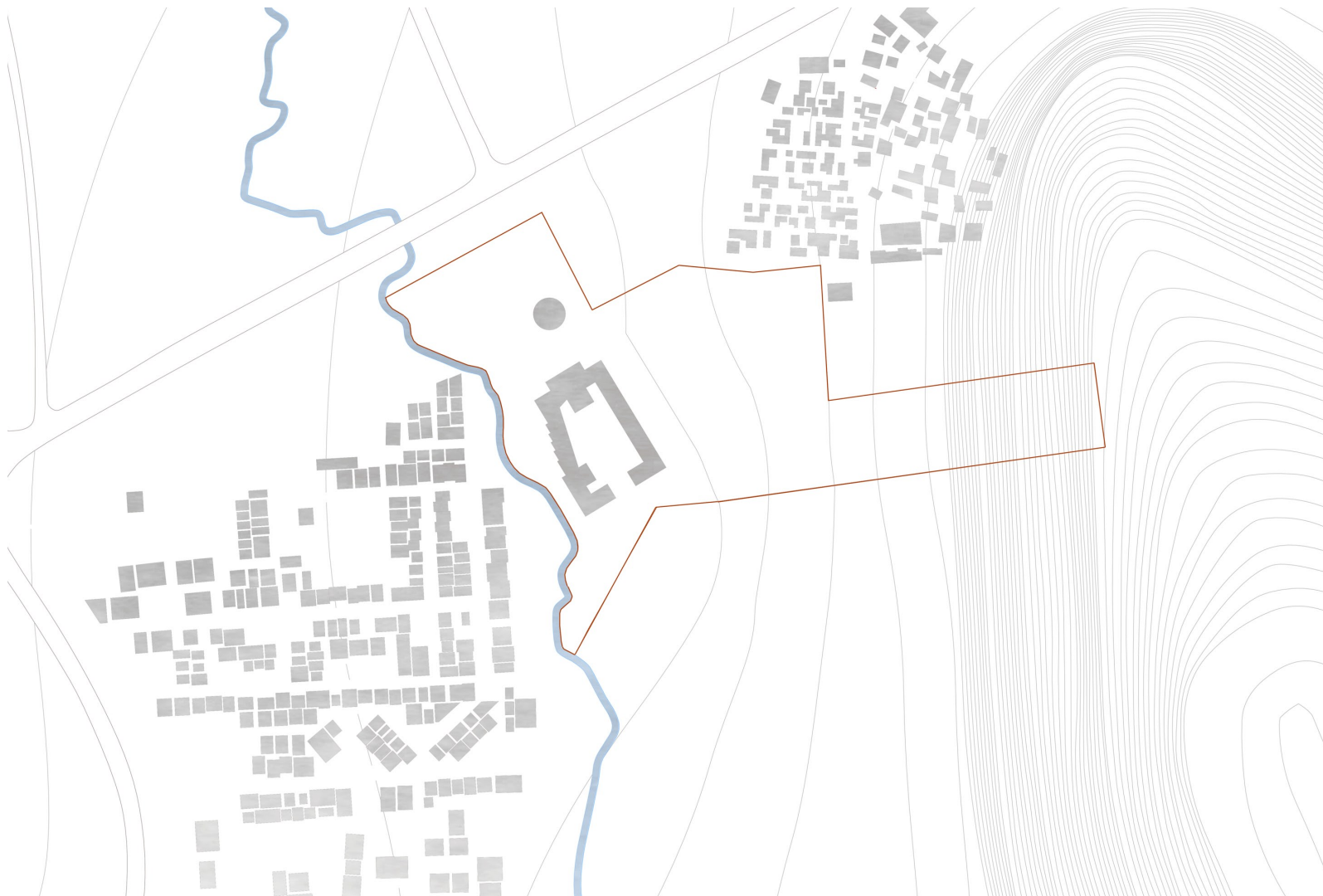
I. BASICS

LOCATION



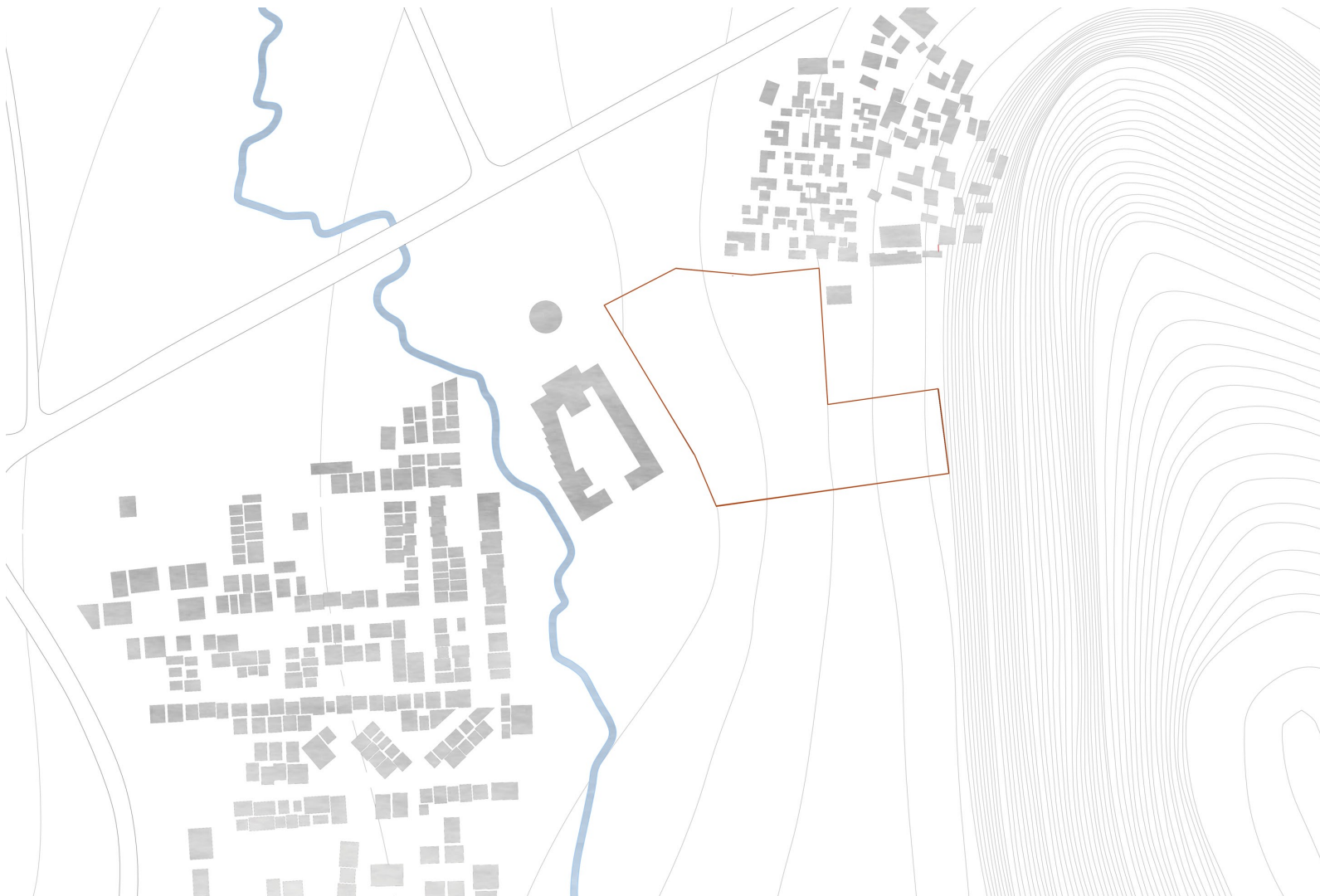
I. BASICS

LOT



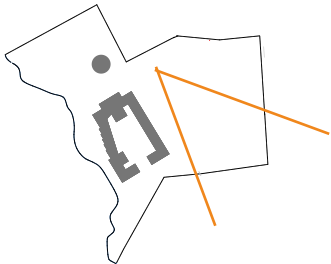
I. BASICS

LOT



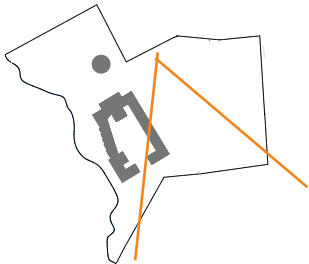
I. BASICS

LOT



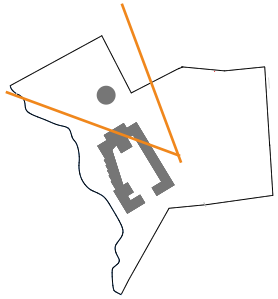
I. BASICS

LOT



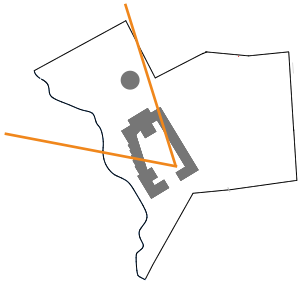
I. BASICS

LOT



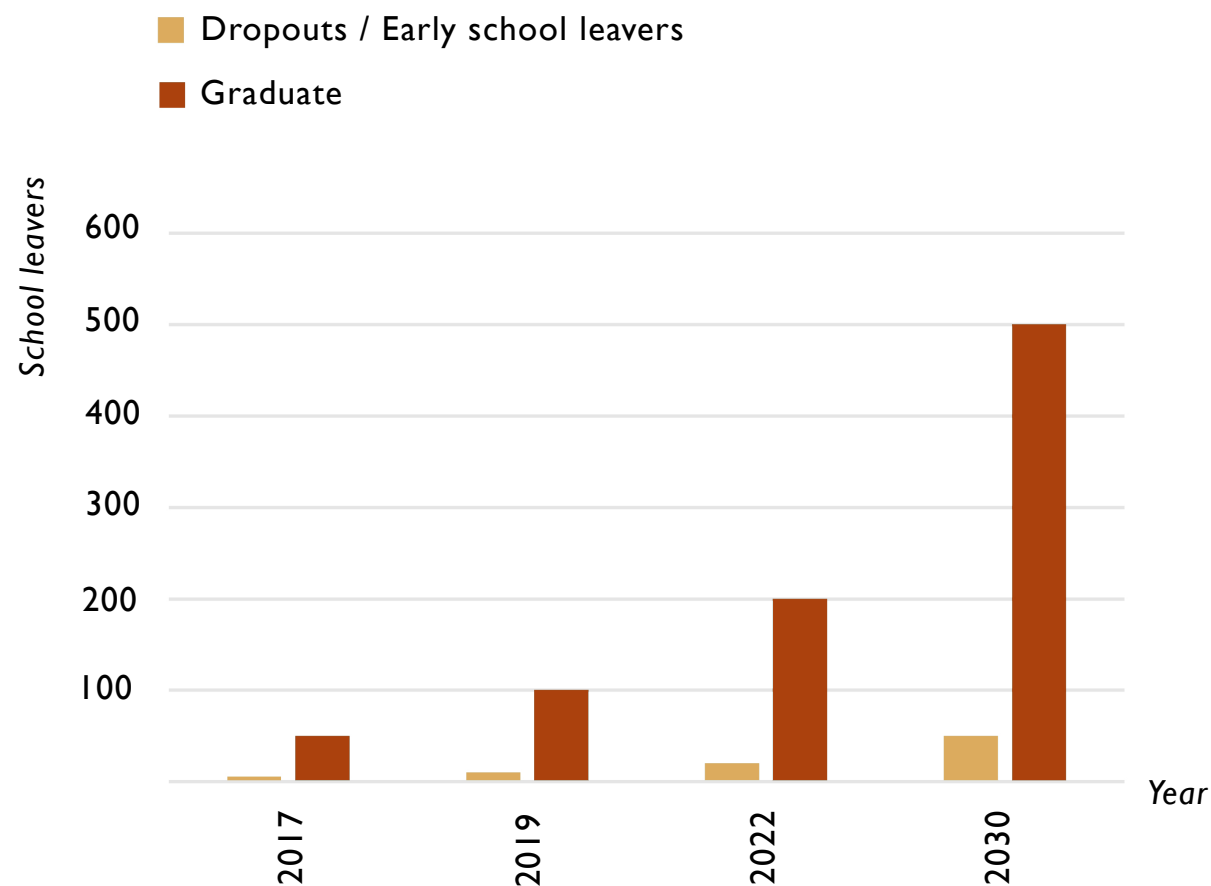
I . BASICS

LOT



I. BASICS

FINANCING AND MODULARITY

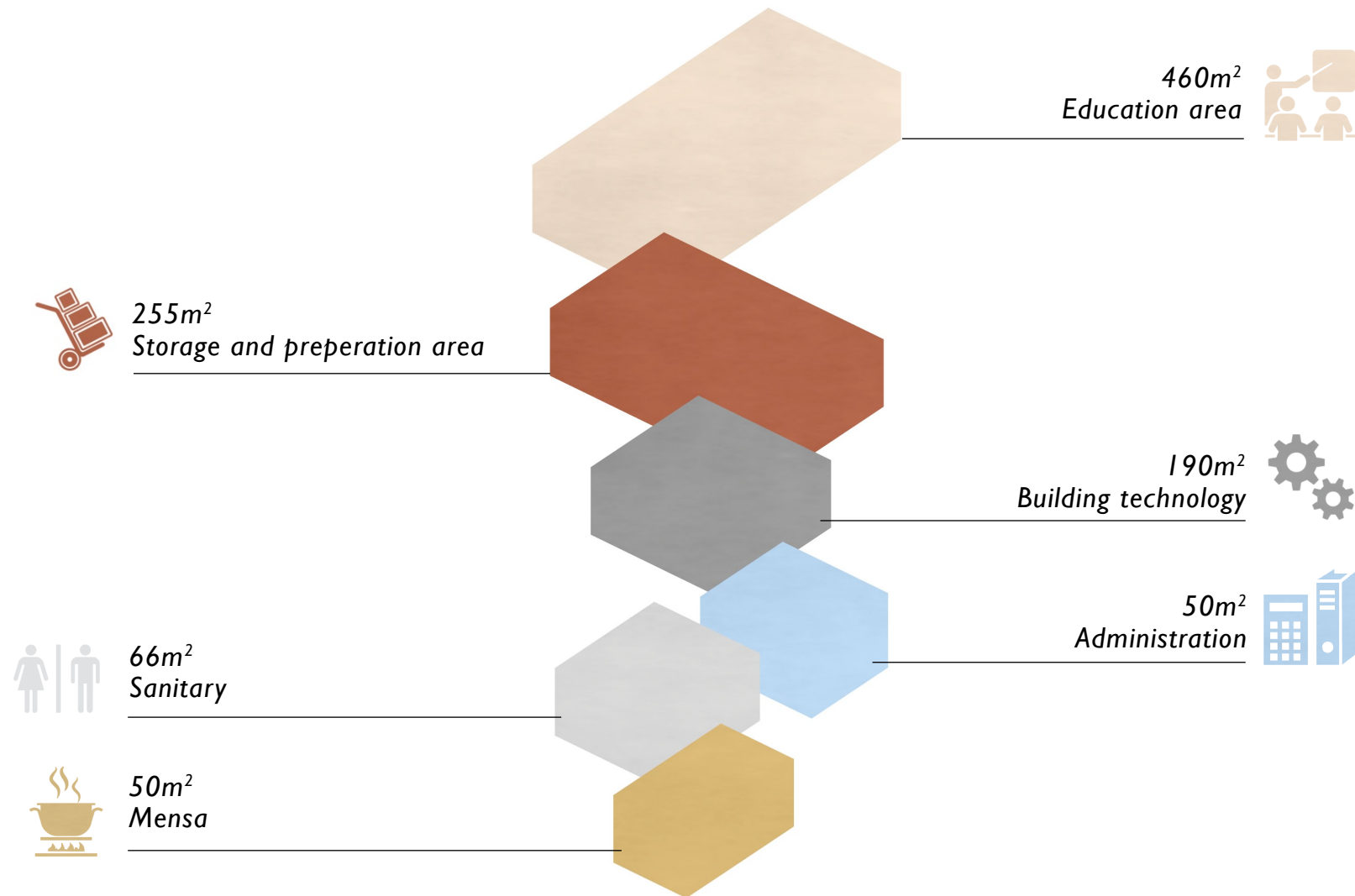


Prediction: School leavers Secondary School of Society of Pilar

2. ANALYSIS

2. ANALYSIS

WELDING SCHOOL

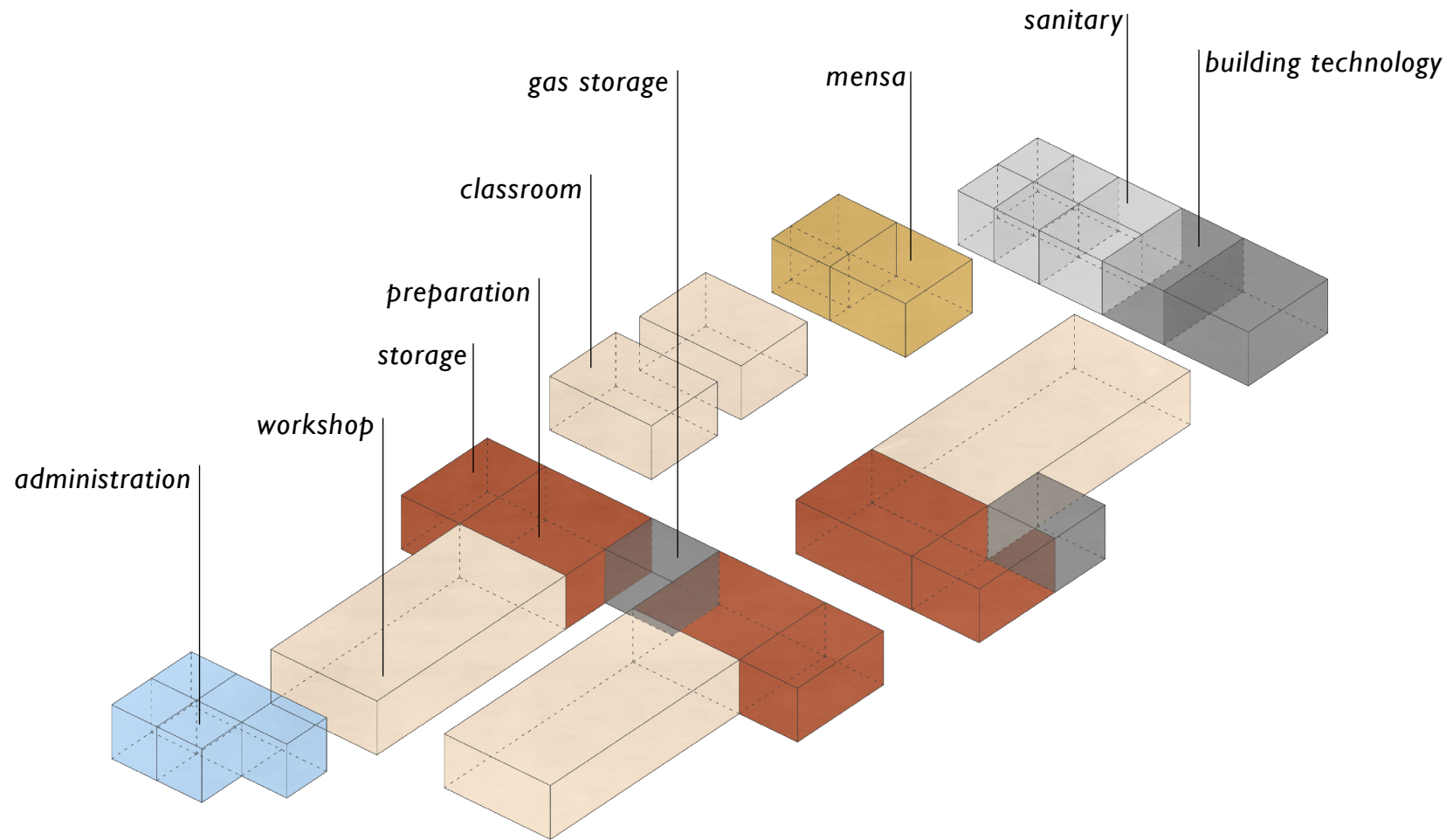


requirements for 40 students*

*by Richtlinie 1102 Deutschen Verbandes für Schweisstechnik e.V. (DVS)

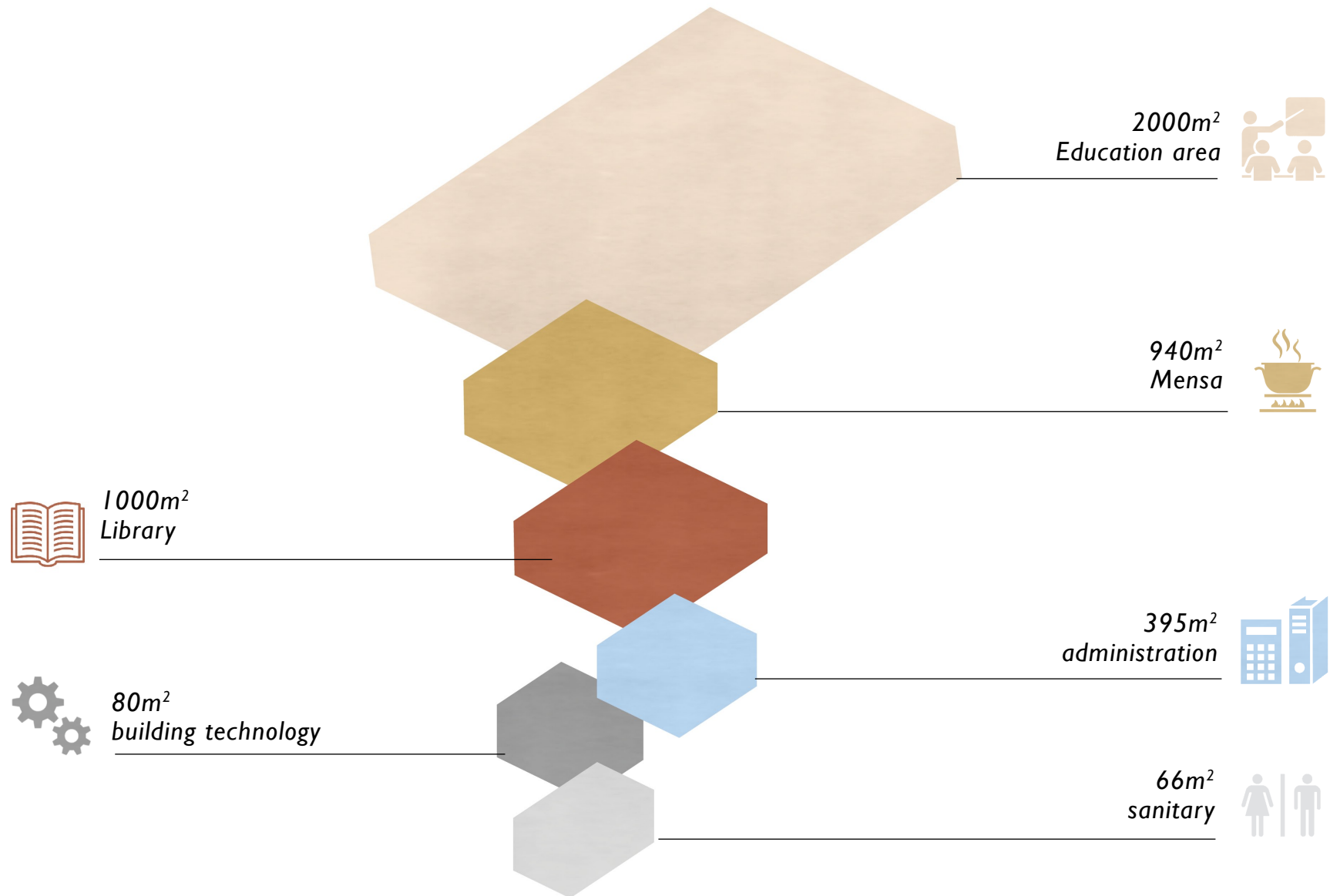
2. ANALYSIS

WELDING SCHOOL



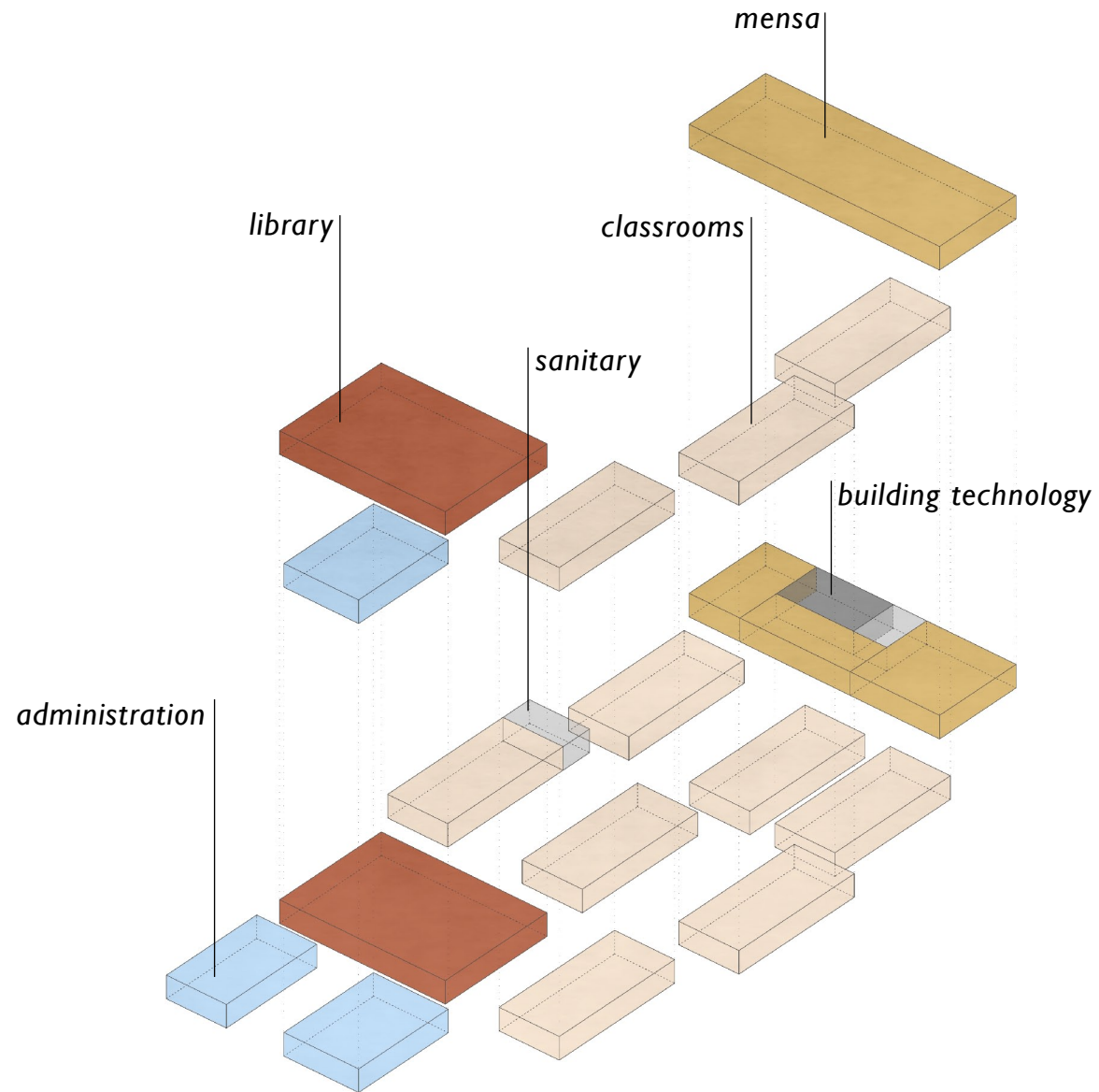
2. ANALYSIS

COLLEGE



2. ANALYSIS

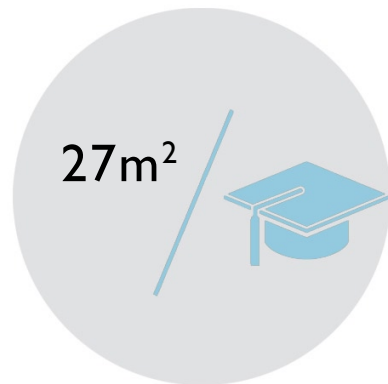
COLLEGE



2. ANALYSIS

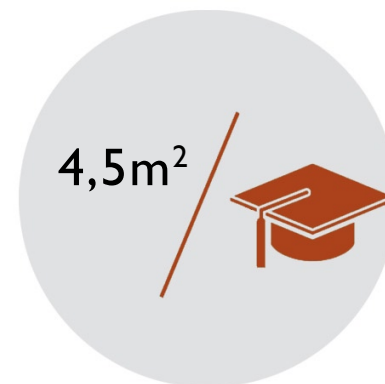
COMPARISON

Welding School



area / student

College



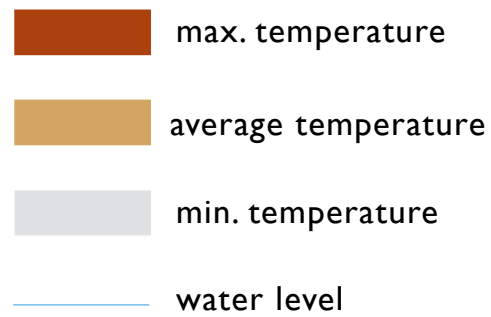
area / student

3. CLIMA

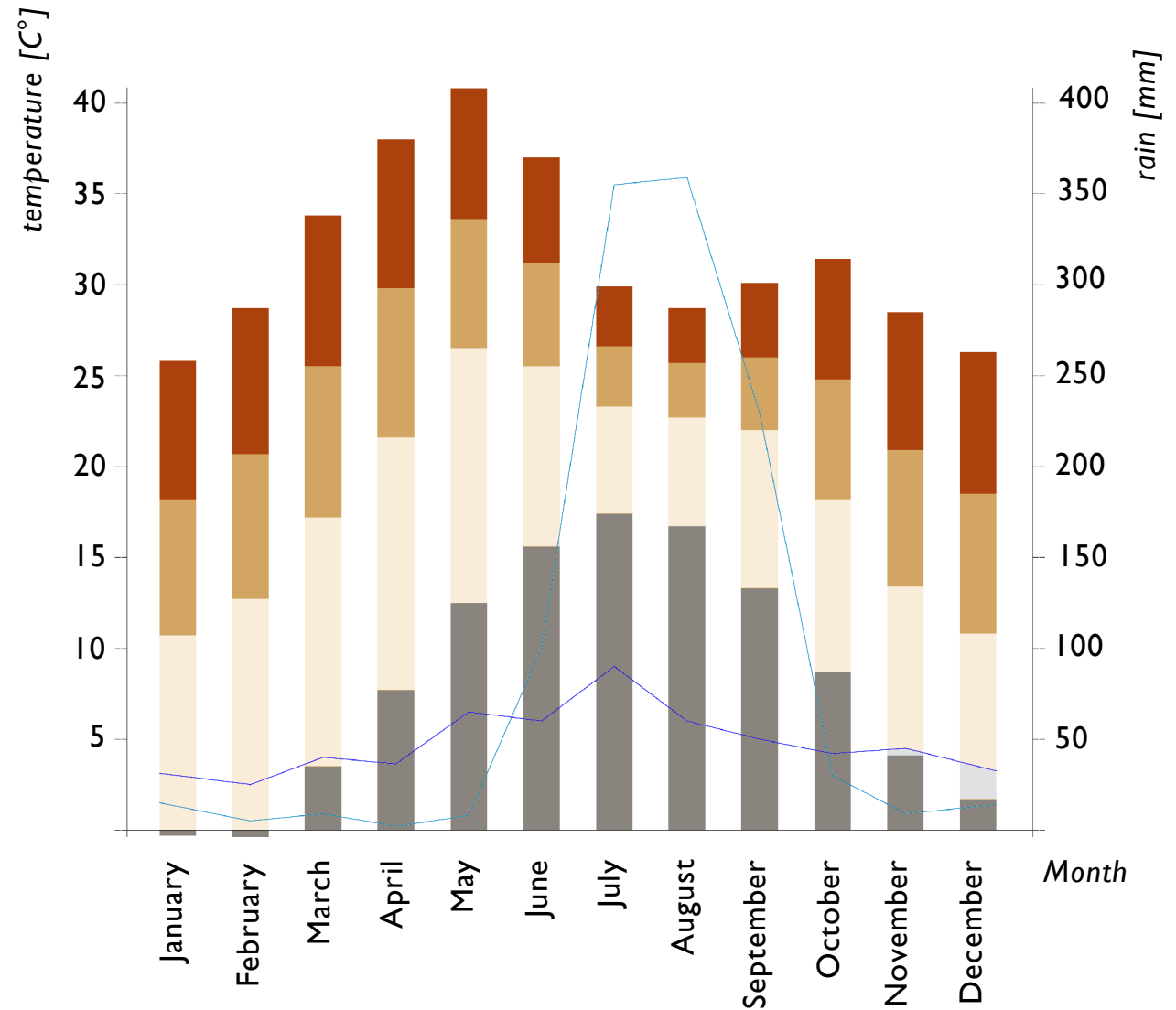
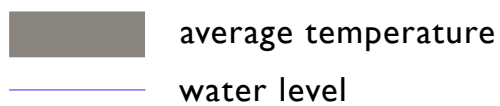
3. CLIMA

TEMPERATURE AND RAIN

BHOPAL

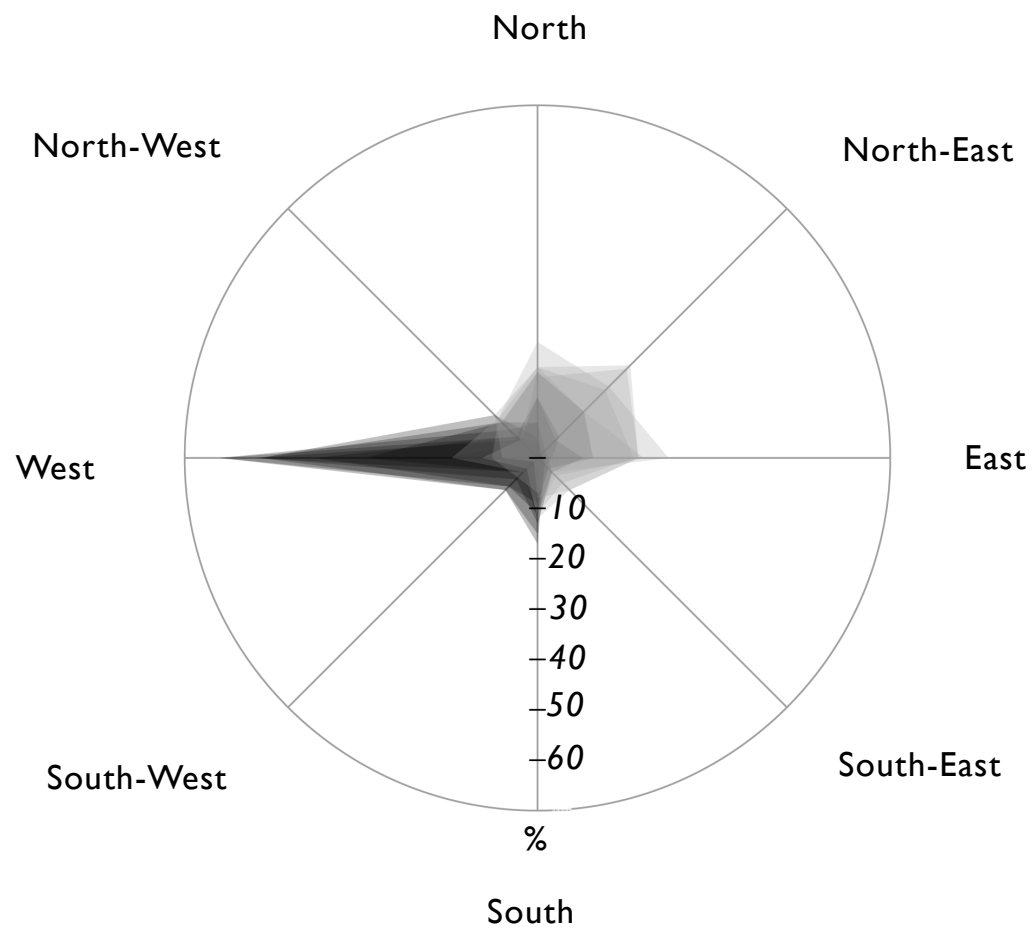


WEIMAR



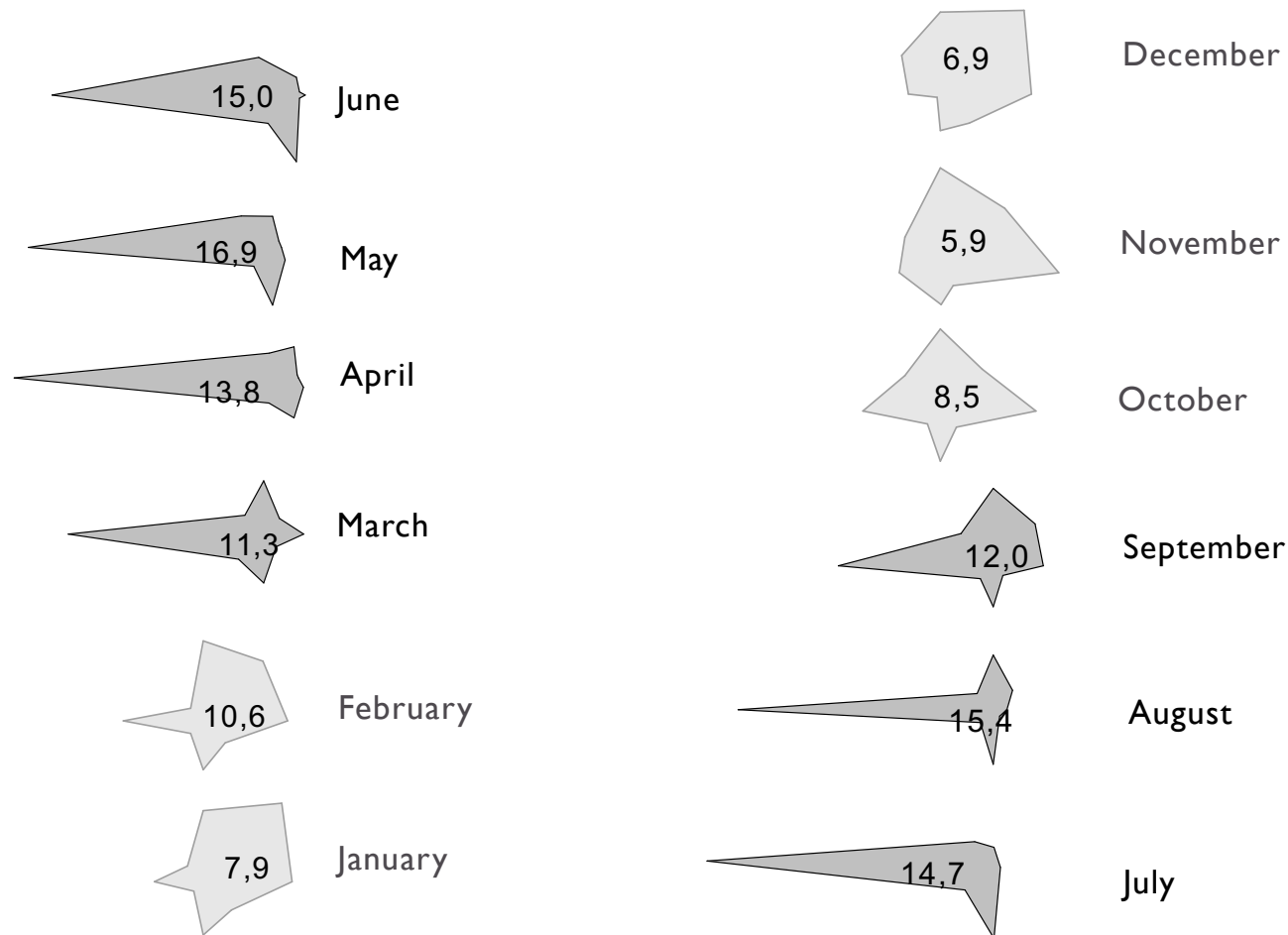
3. CLIMA

WIND DIRECTION



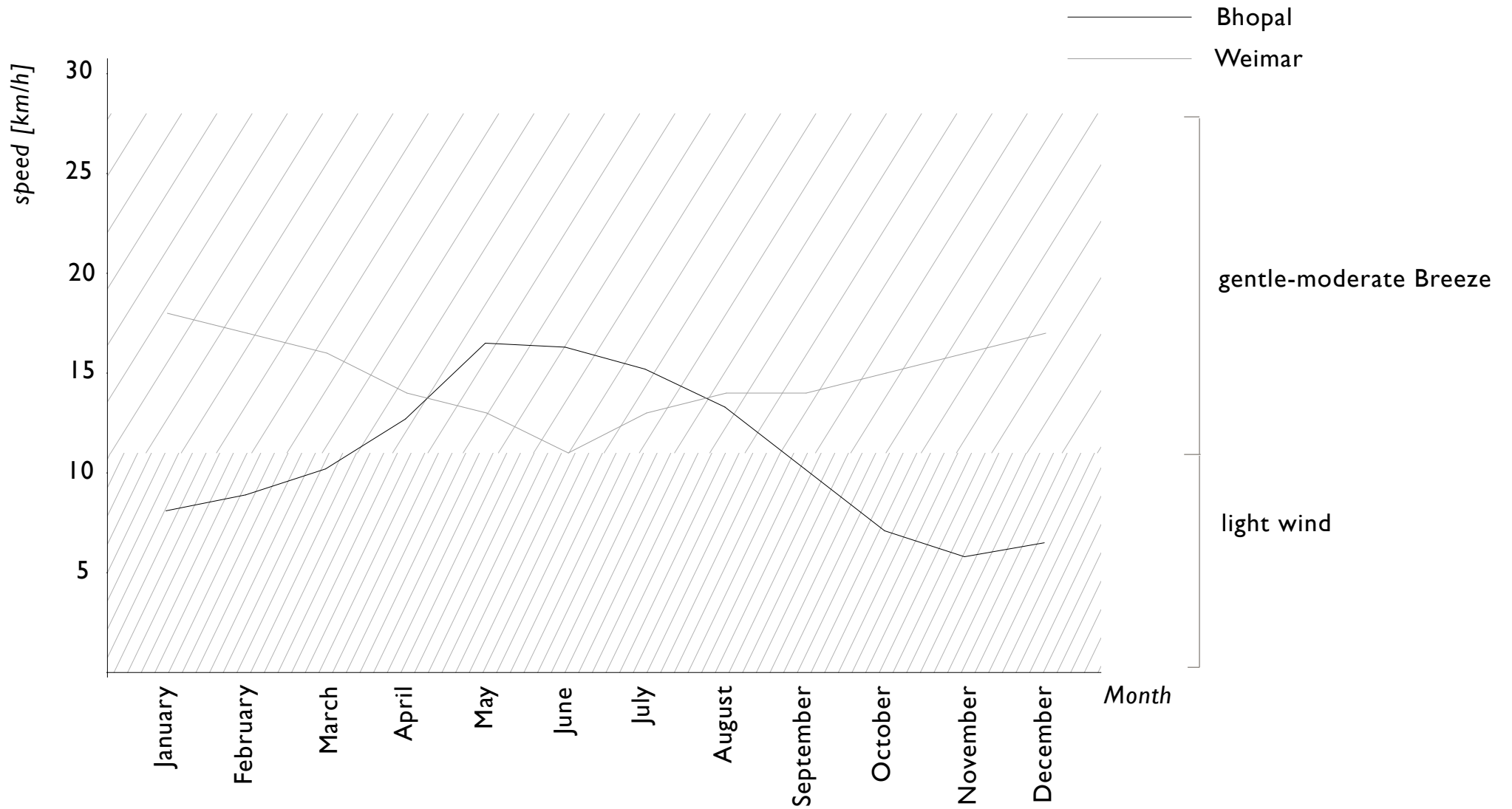
3. CLIMA

WIND DIRECTION



3. CLIMA

WIND SPEED

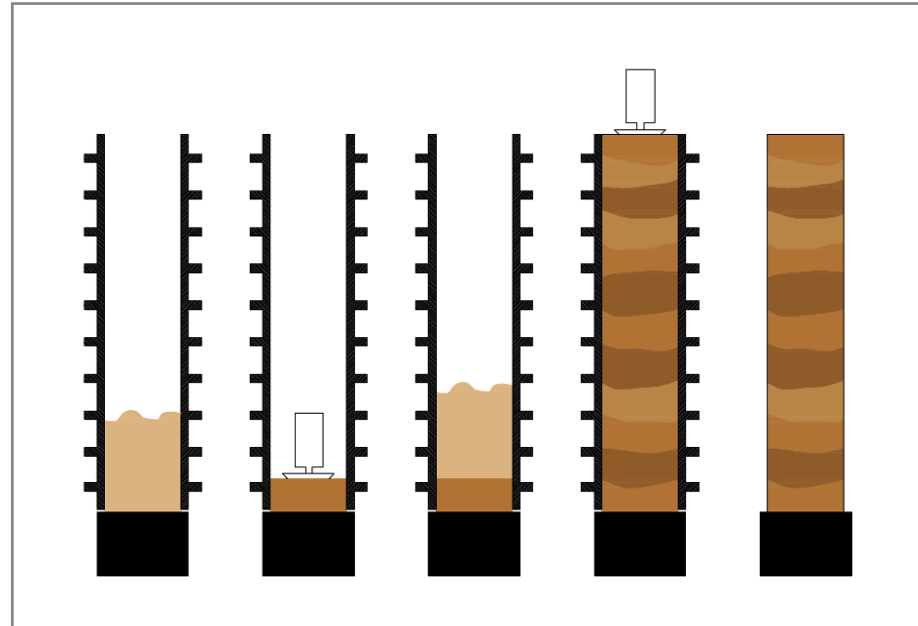


3. CLIMA

MATERIAL



Rammed earth

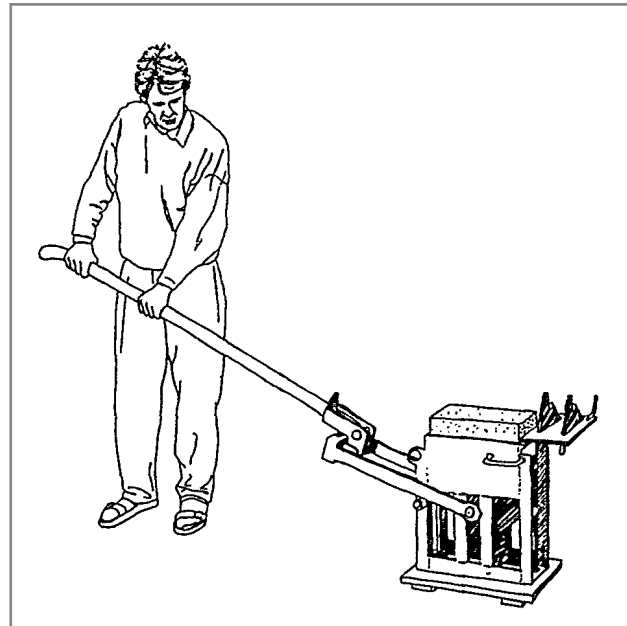


Rammed earth construction

3. CLIMA MATERIAL



Compressed Stabilised Earth Blocks (CSEB)



CSEB Press

4. ARCHITECTURE

4. ARCHITECTURE

INDIA



Made in Earth - Casa Vellore, Vellore



Satish Gujral - Belgium Embassy, New Delhi



Biome Environmental Solutions - Yellow Train School, Coimbatore



Louis Kahn - Institute of Technology, Ahmedabad



Studio Mumbai - House Ahmedabad, Ahmedabad



Charles Correa - Parekh House, Ahmedabad

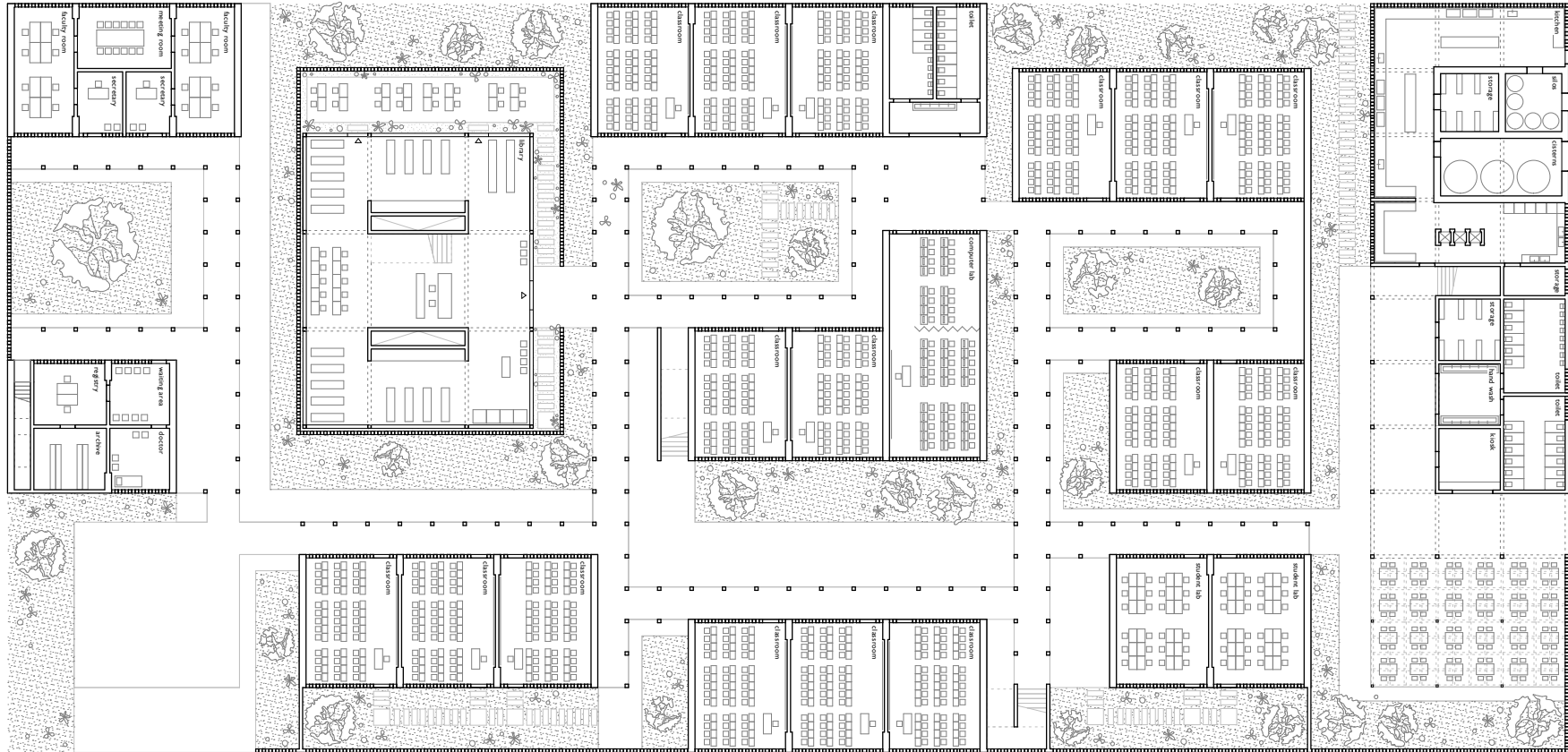
4. ARCHITECTURE

SITE PLAN



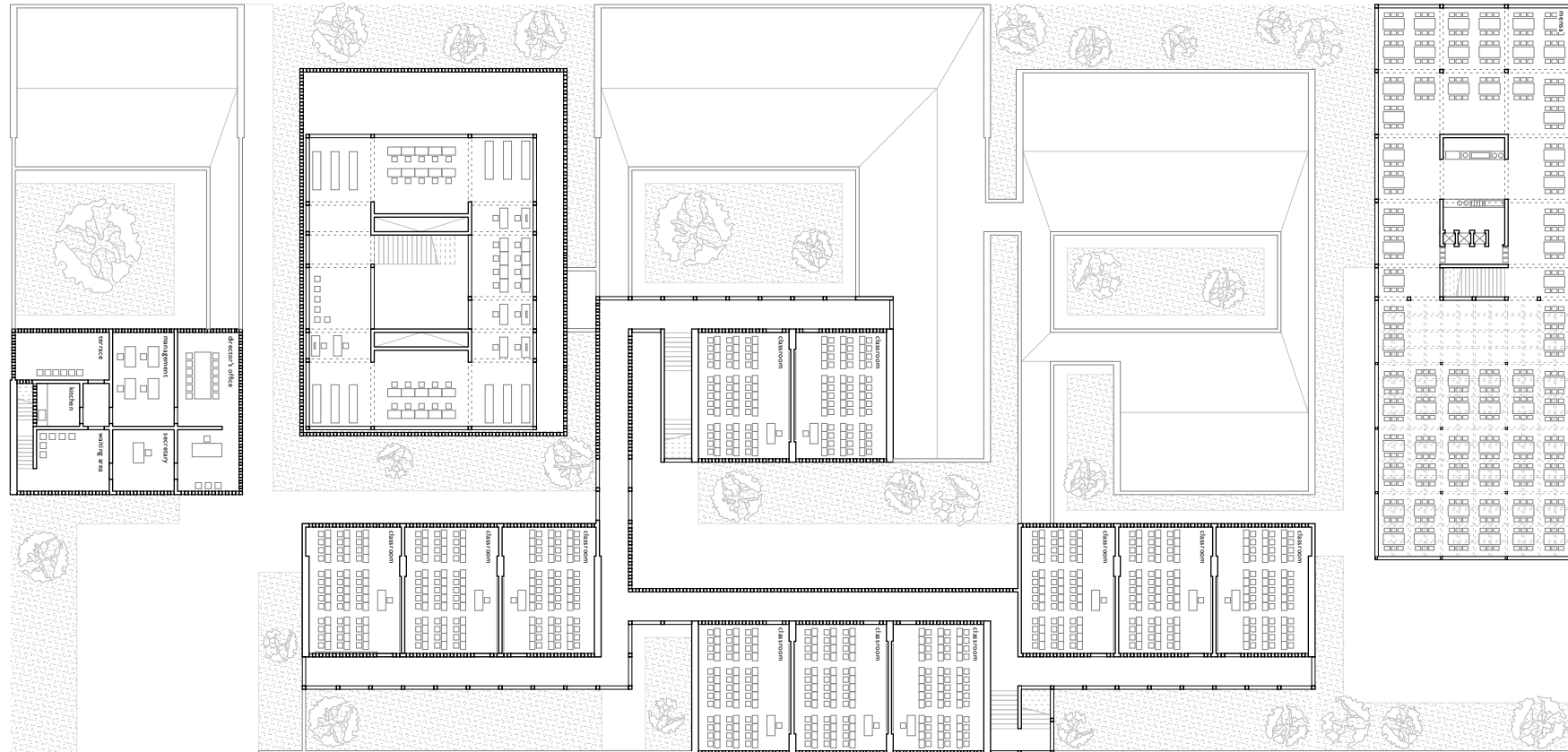
4. ARCHITECTURE

GROUND FLOOR



4. ARCHITECTURE

FIRST FLOOR



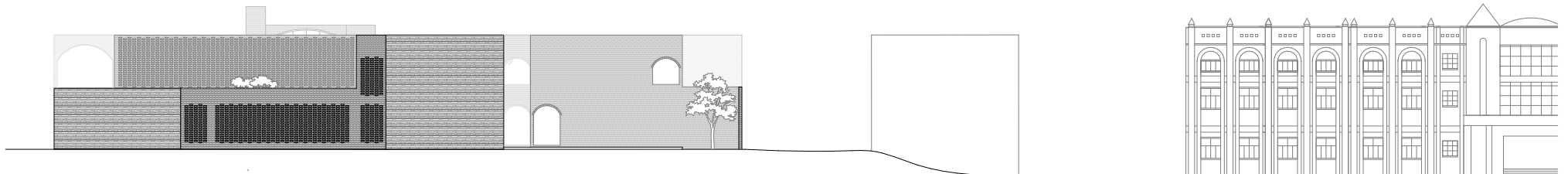
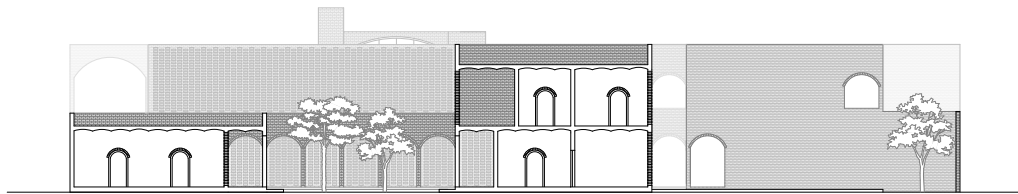
4. ARCHITECTURE

SECTION AND ELEVATION EAST



4. ARCHITECTURE

SECTION AND ELEVATION NORTH



4. ARCHITECTURE

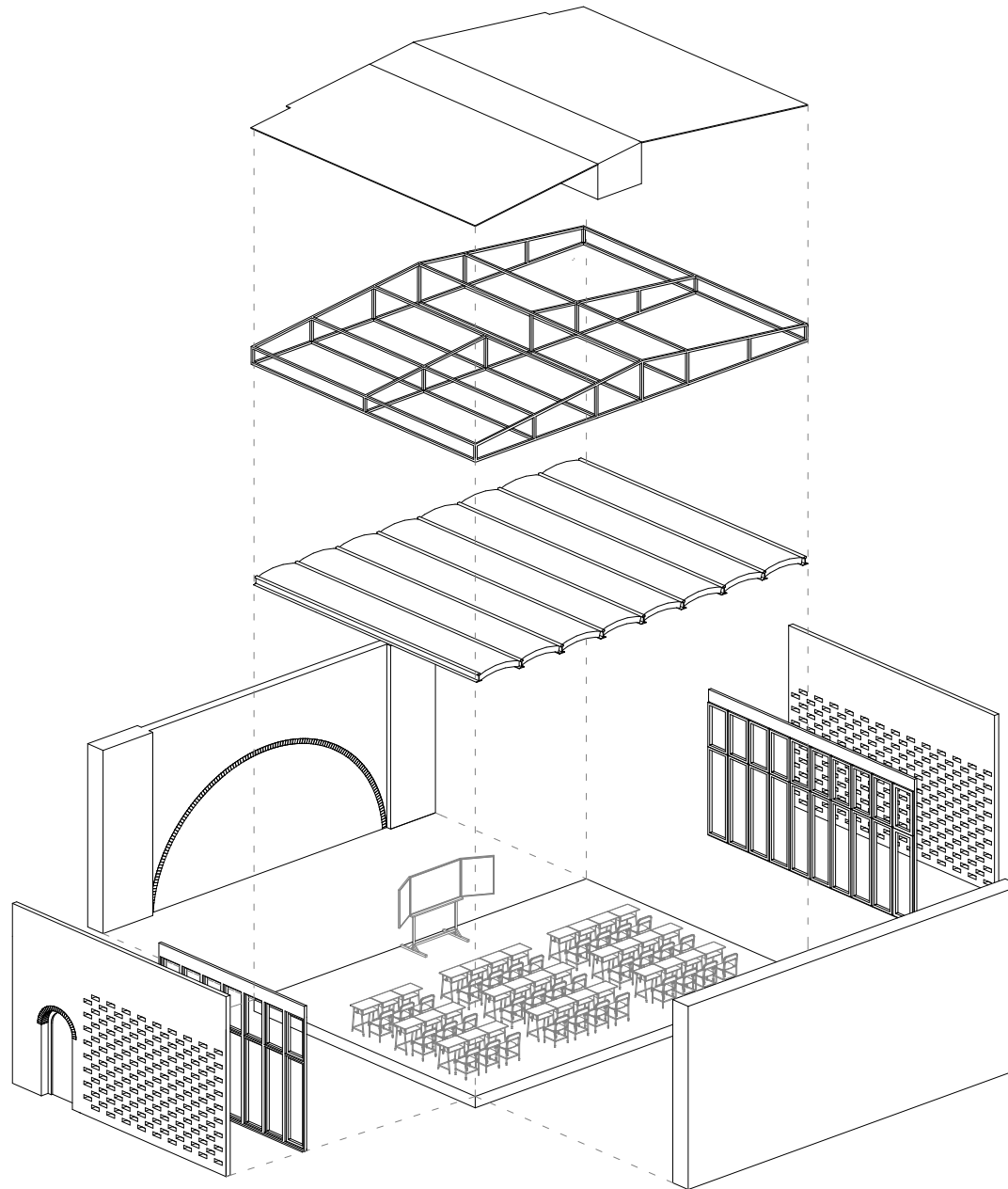
PATIO



5. CONSTRUCTION

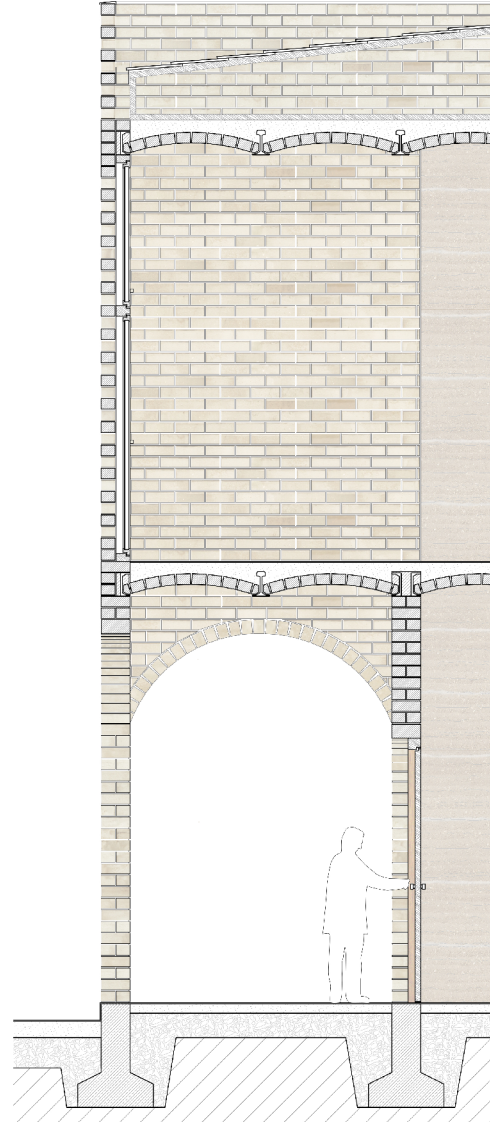
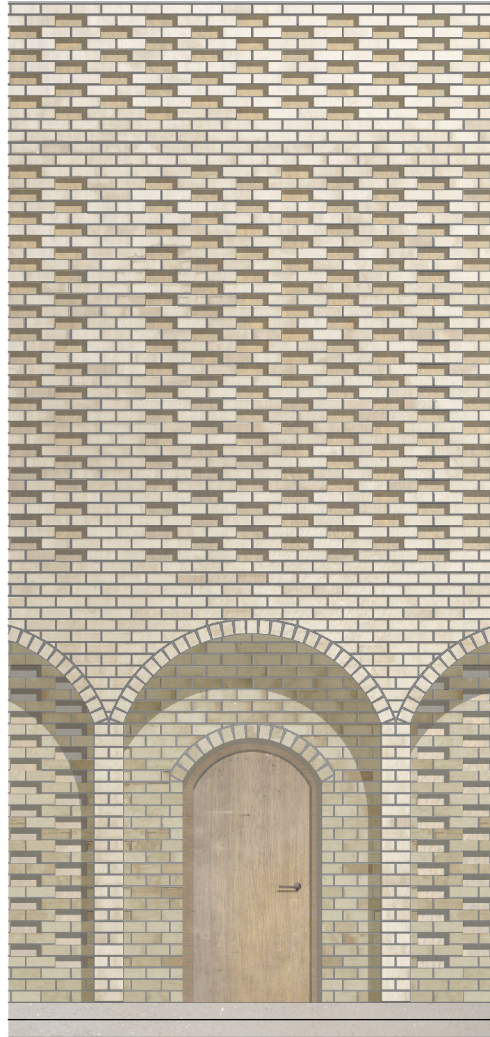
5. CONSTRUCTION

CLASSROOM



5. CONSTRUCTION

CLASSROOM



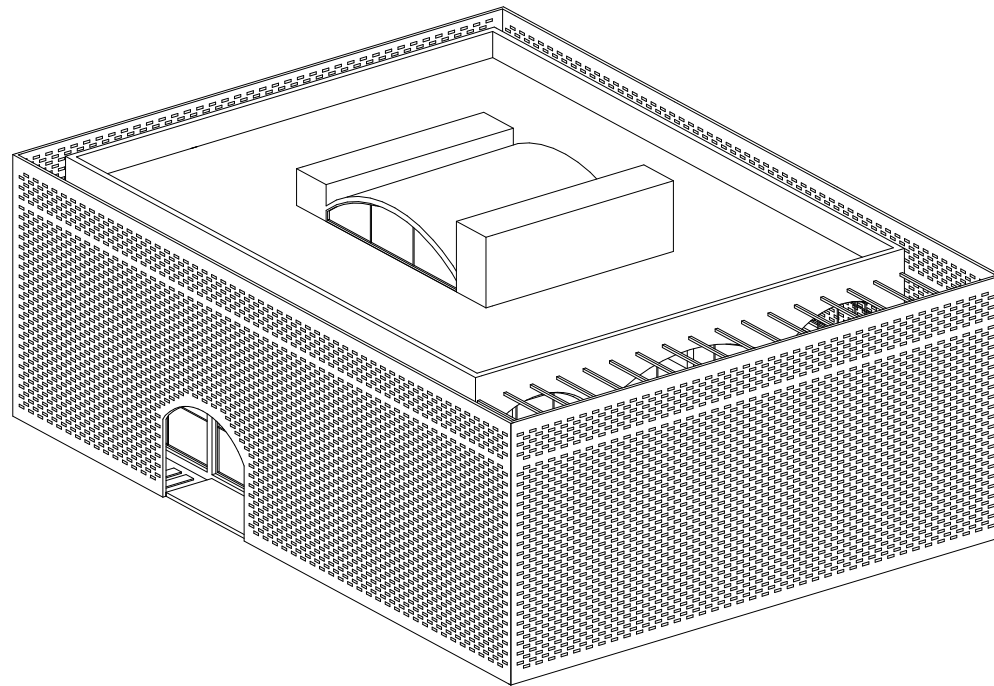
5. CONSTRUCTION

CLASSROOM



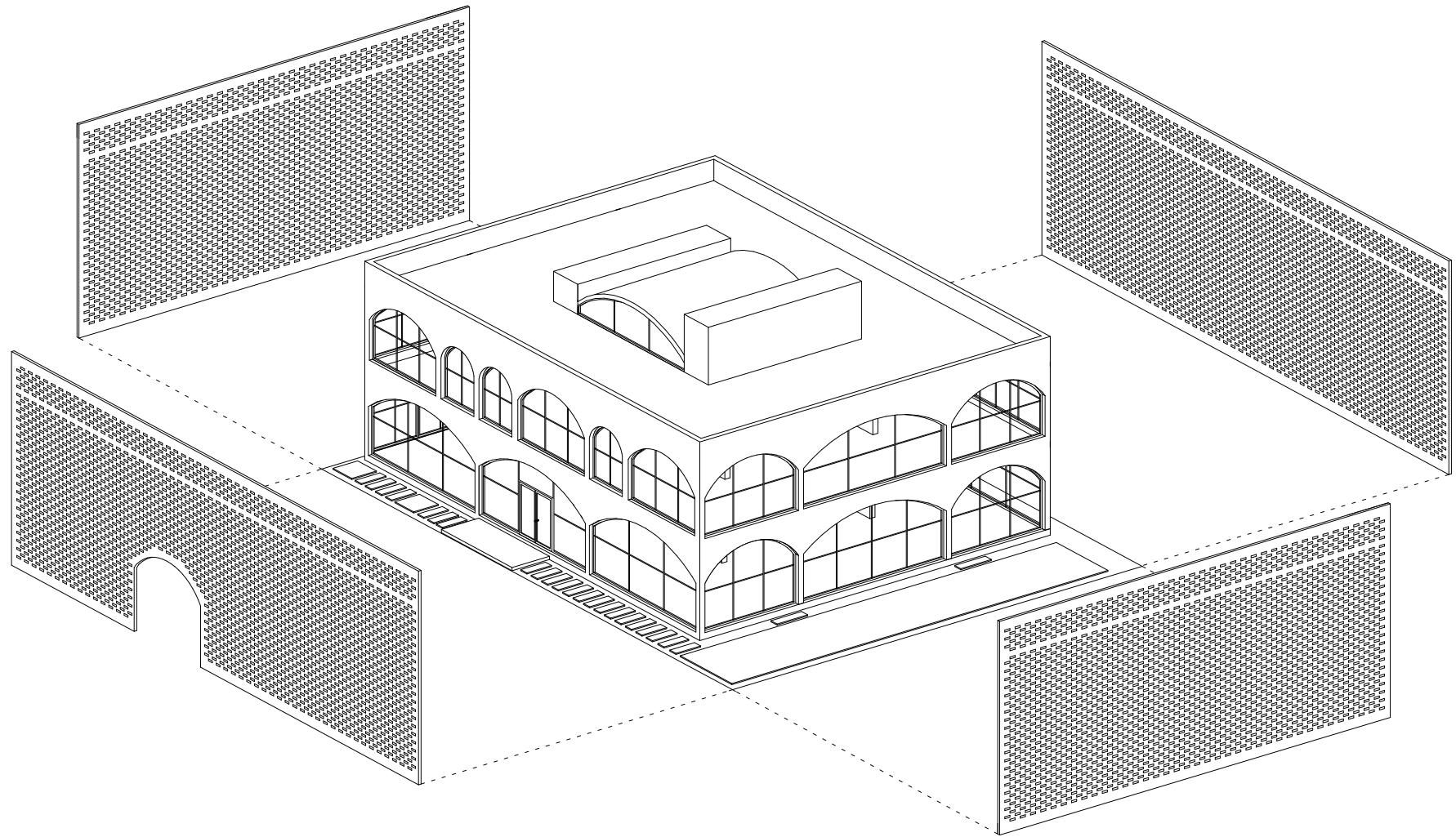
5. CONSTRUCTION

LIBRARY



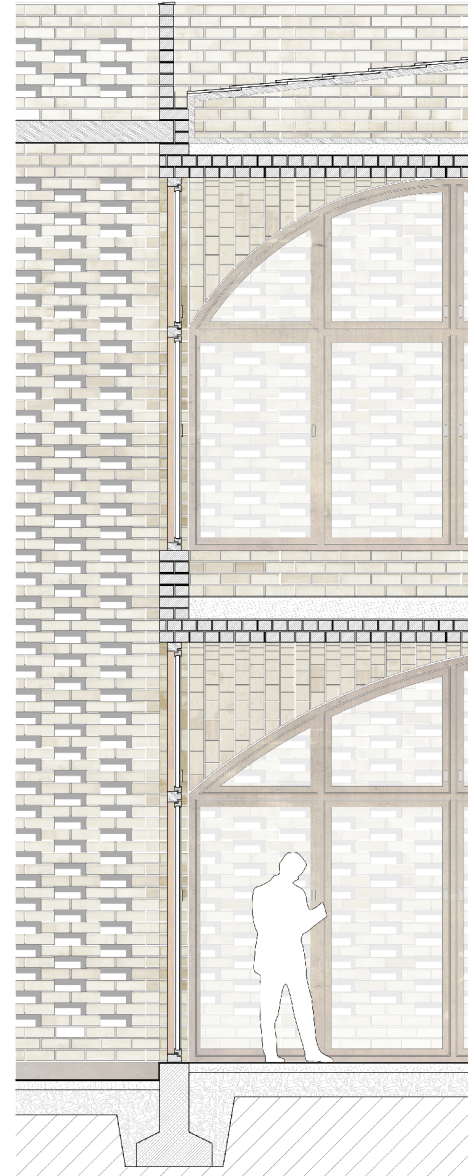
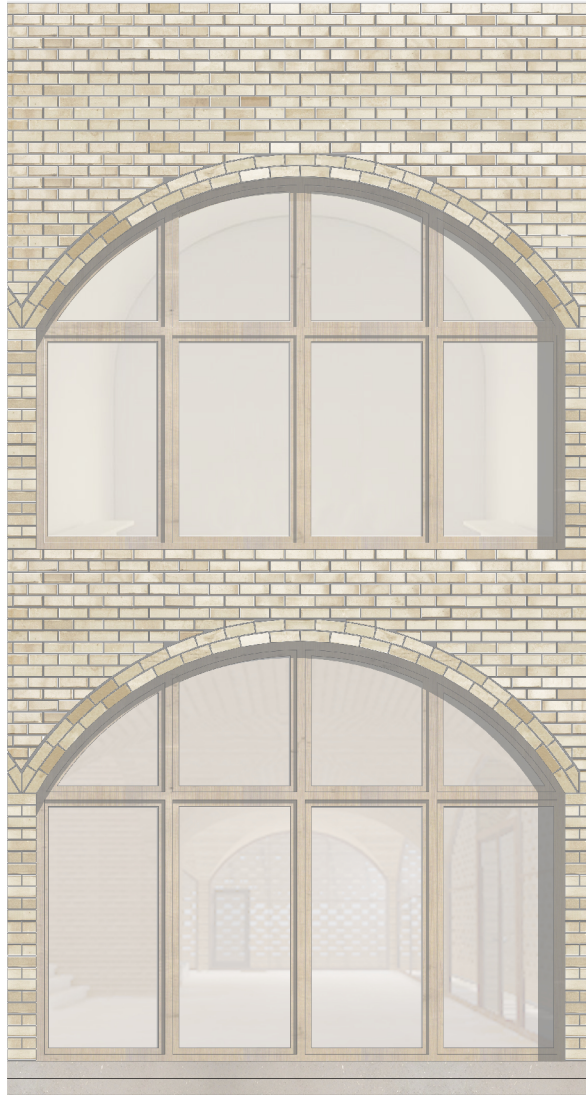
5. CONSTRUCTION

LIBRARY



5. CONSTRUCTION

LIBRARY



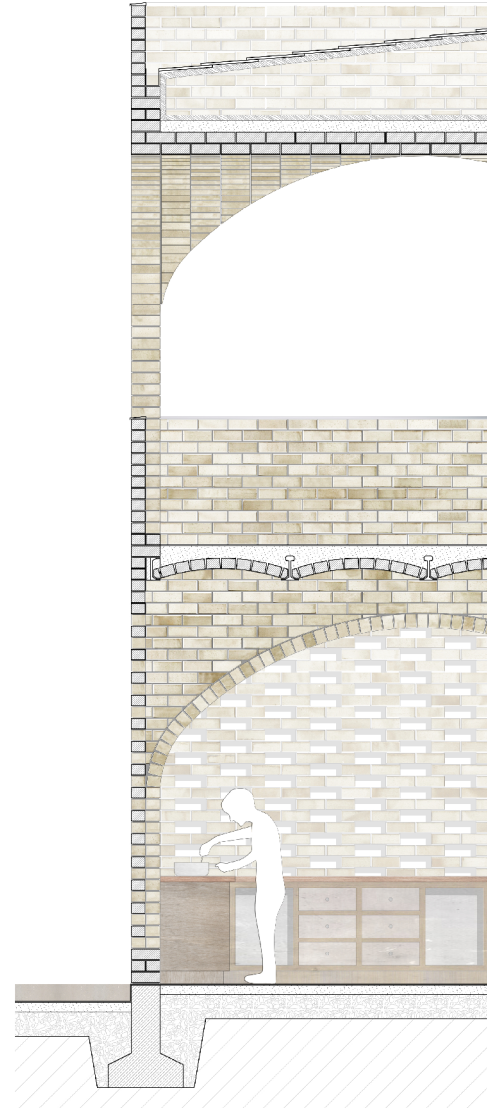
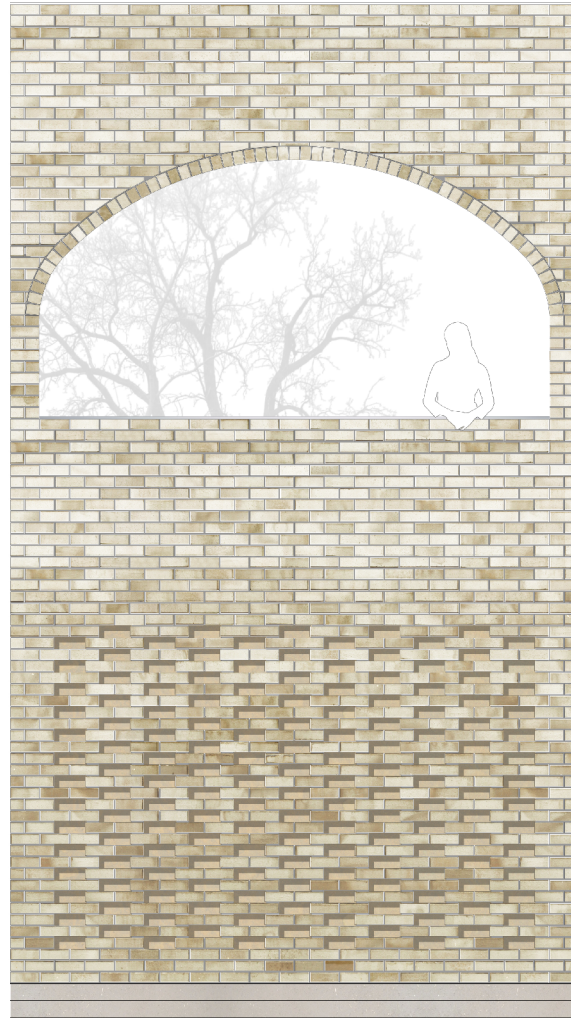
5. CONSTRUCTION

LIBRARY



5. CONSTRUCTION

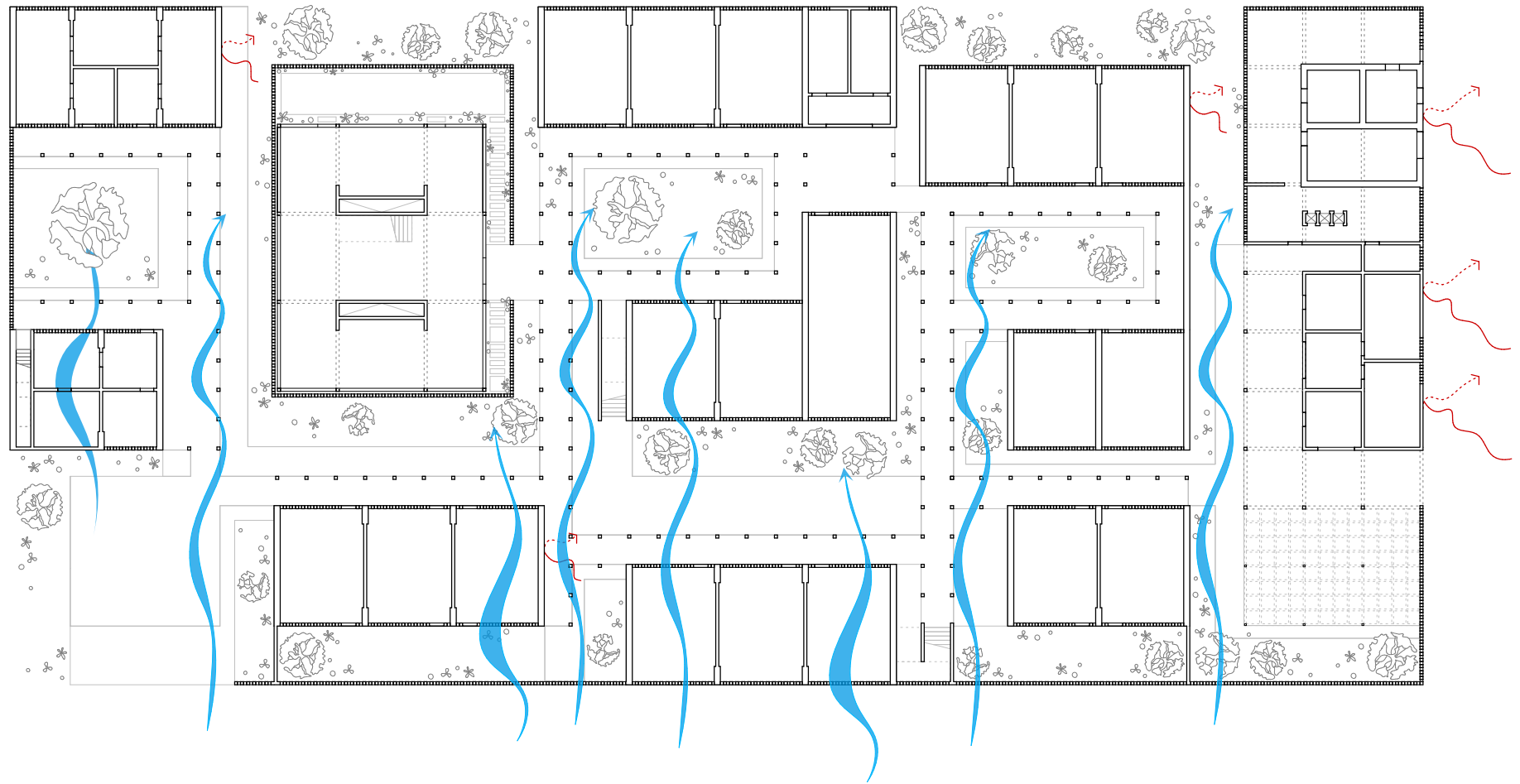
MENSA



6. CLIMATIC STRATEGIES

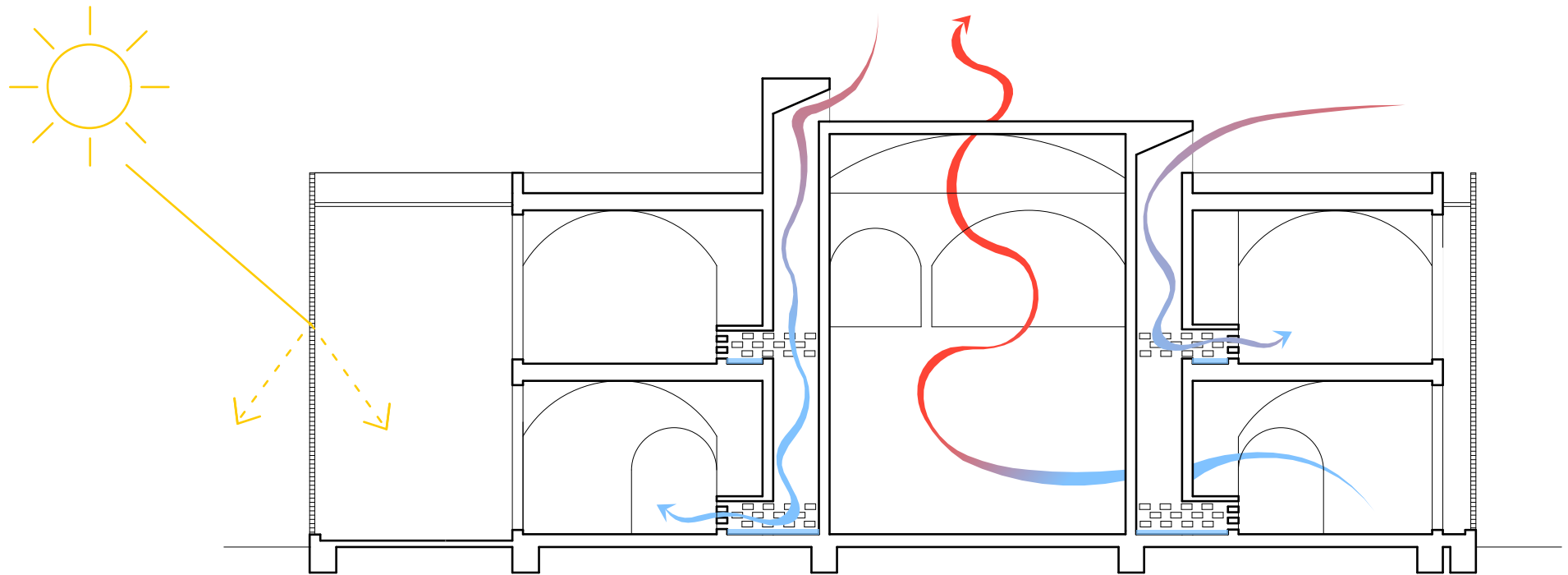
6. CLIMATIC STRATEGIES

FLOOR PLAN



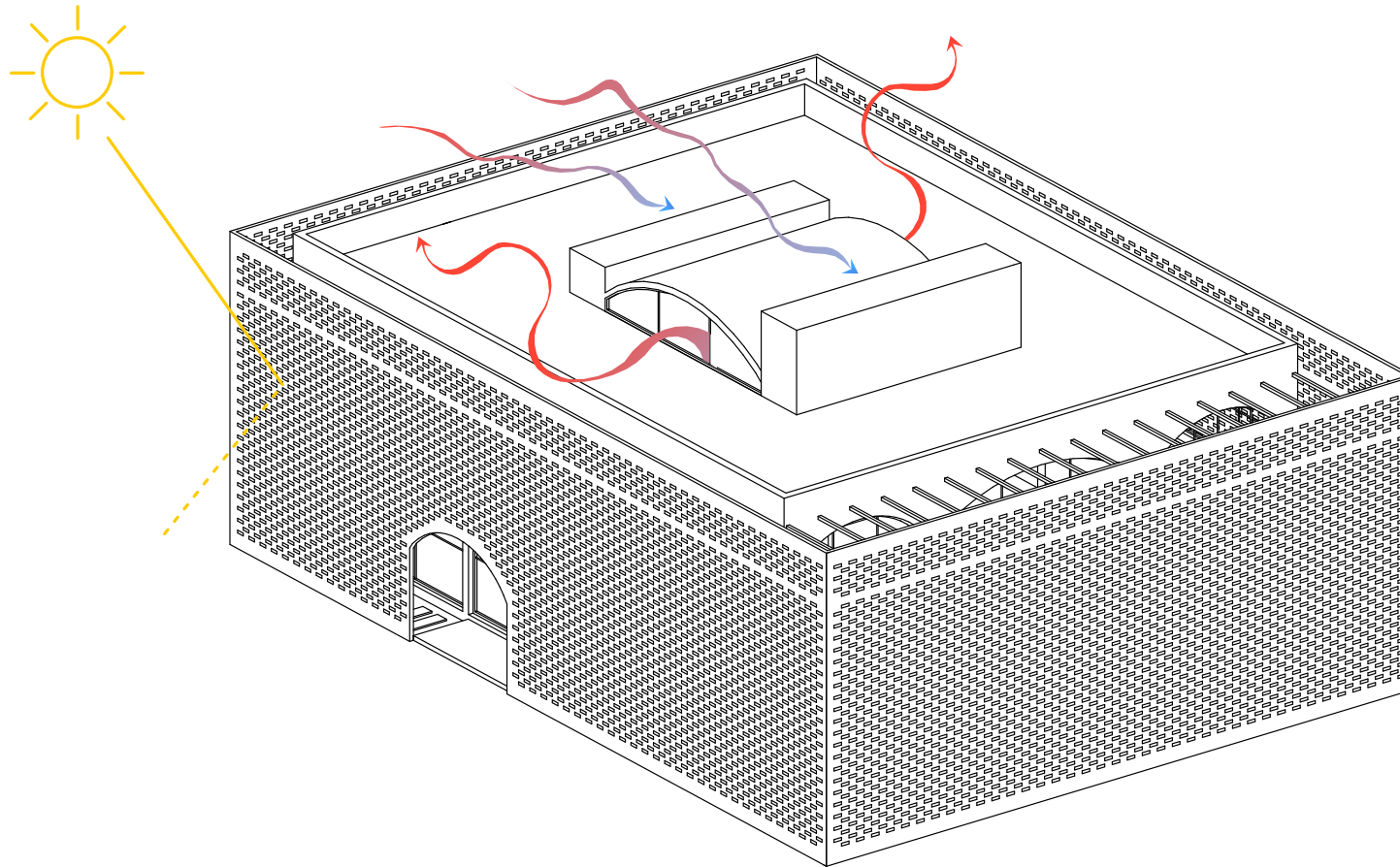
6. CLIMATIC STRATEGIES

LIBRARY



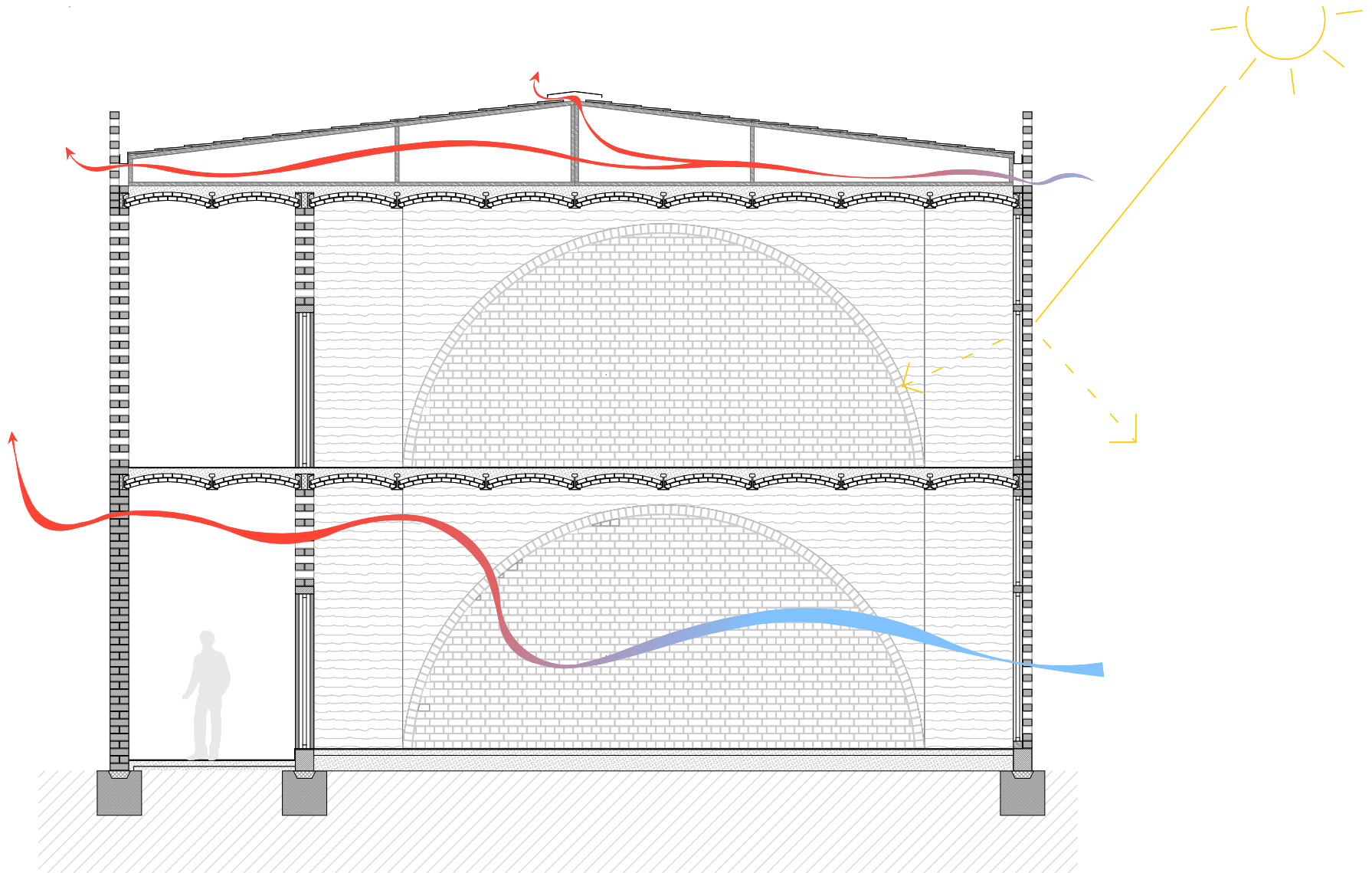
6. CLIMATIC STRATEGIES

LIBRARY



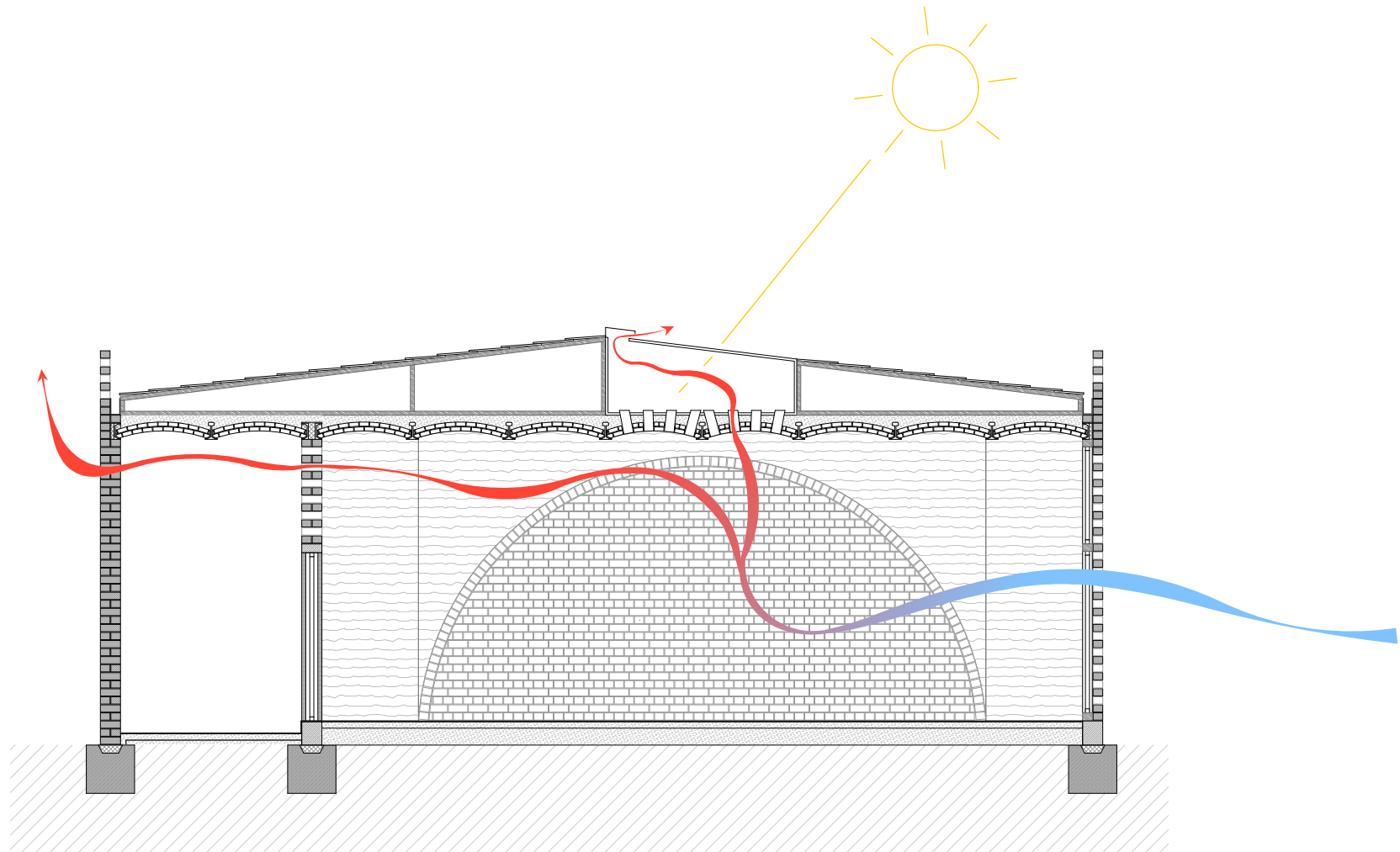
6. CLIMATIC STRATEGIES

CLASSROOM



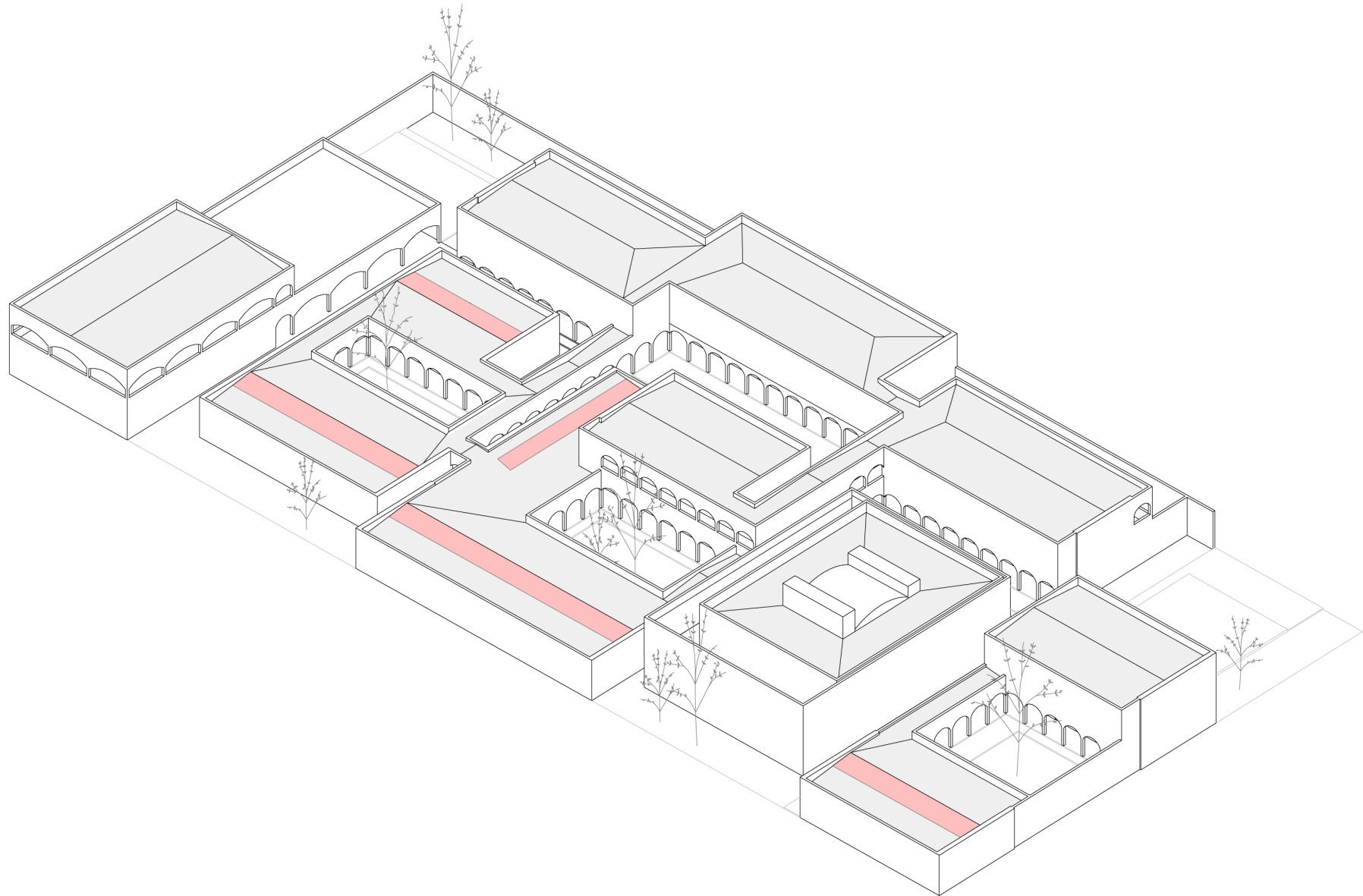
6. CLIMATIC STRATEGIES

CLASSROOM



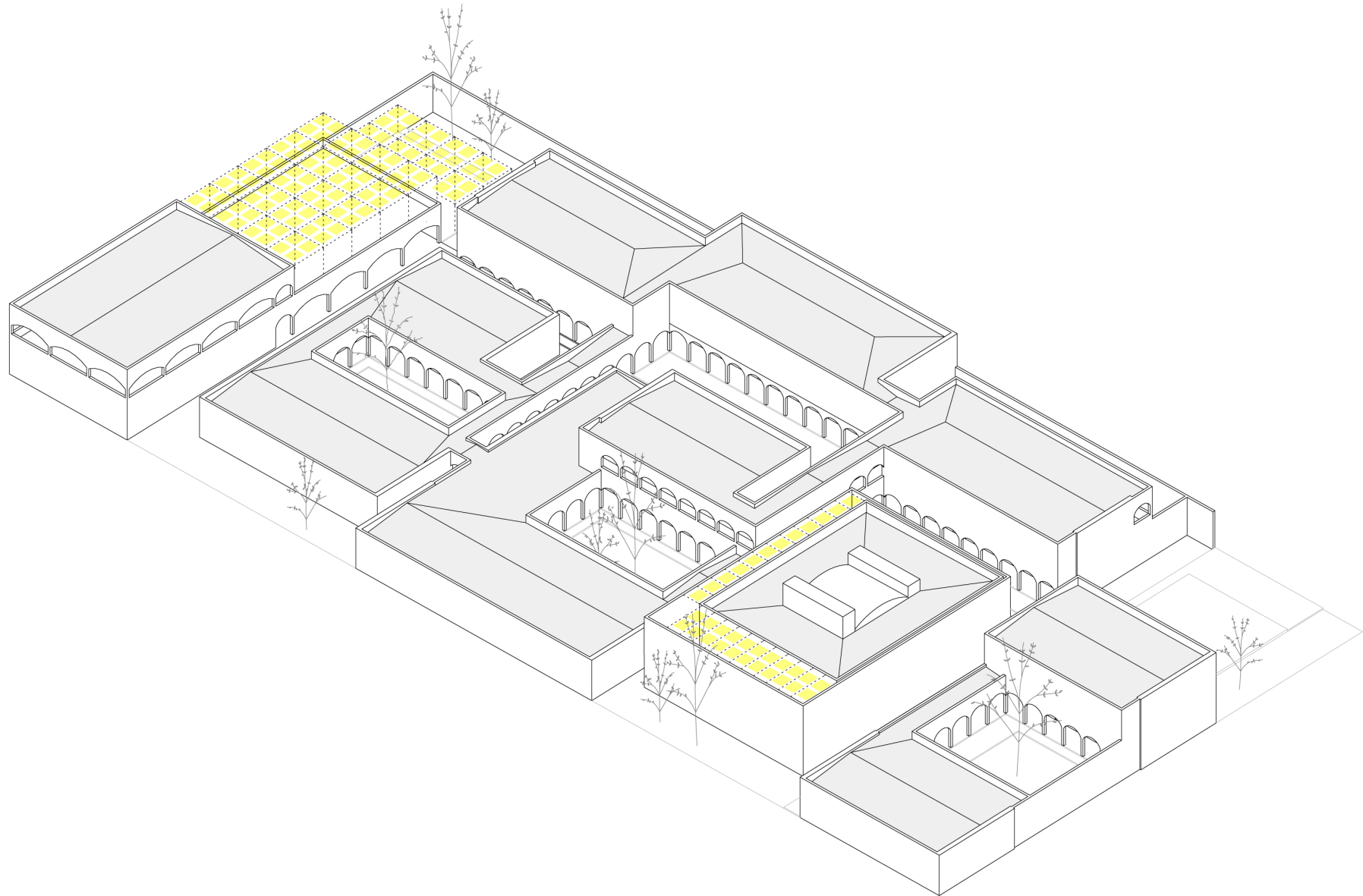
6. CLIMATIC STRATEGIES

SOLAR BOX



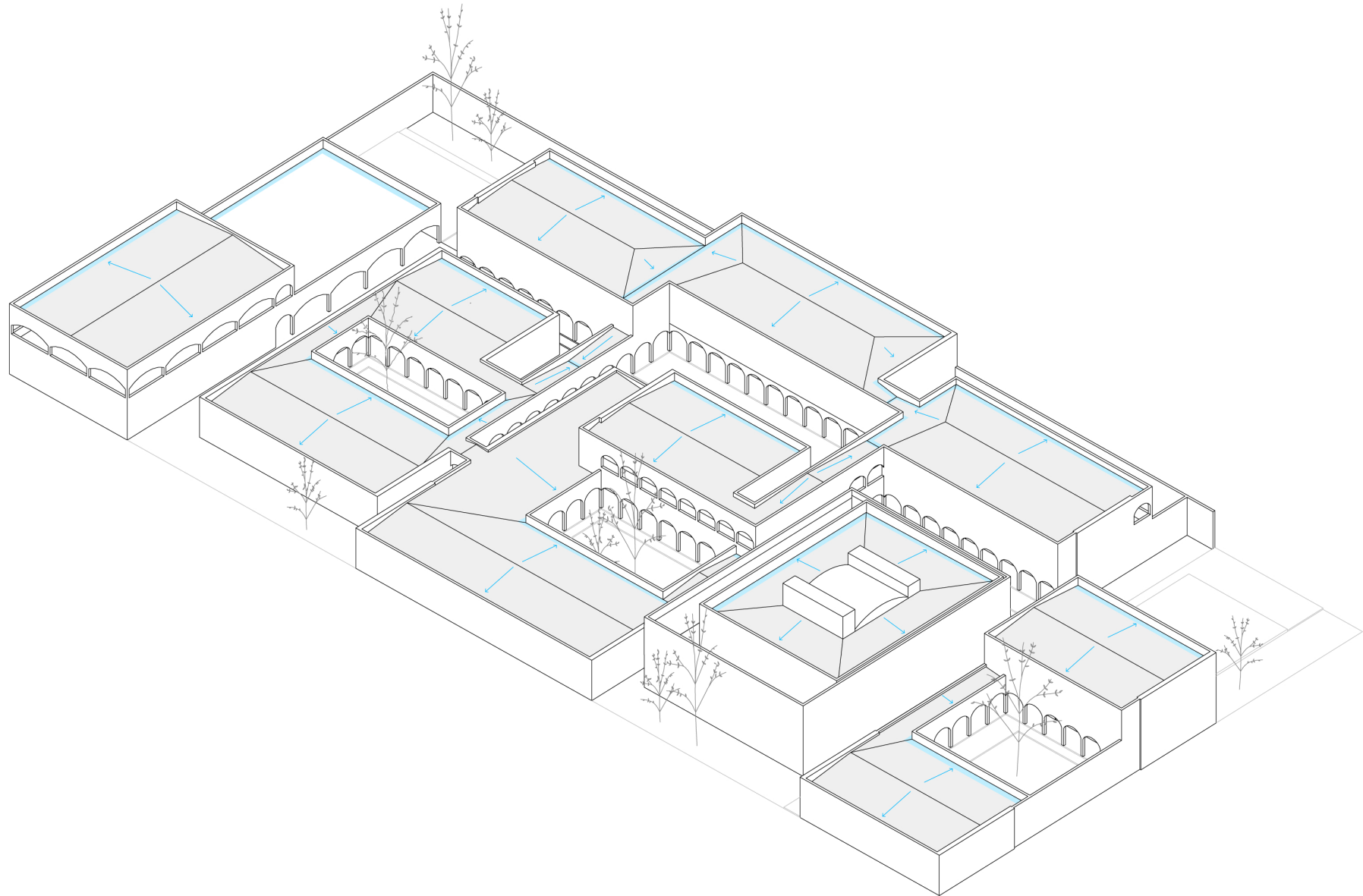
6. CLIMATIC STRATEGIES

SOLAR COLLECTOR



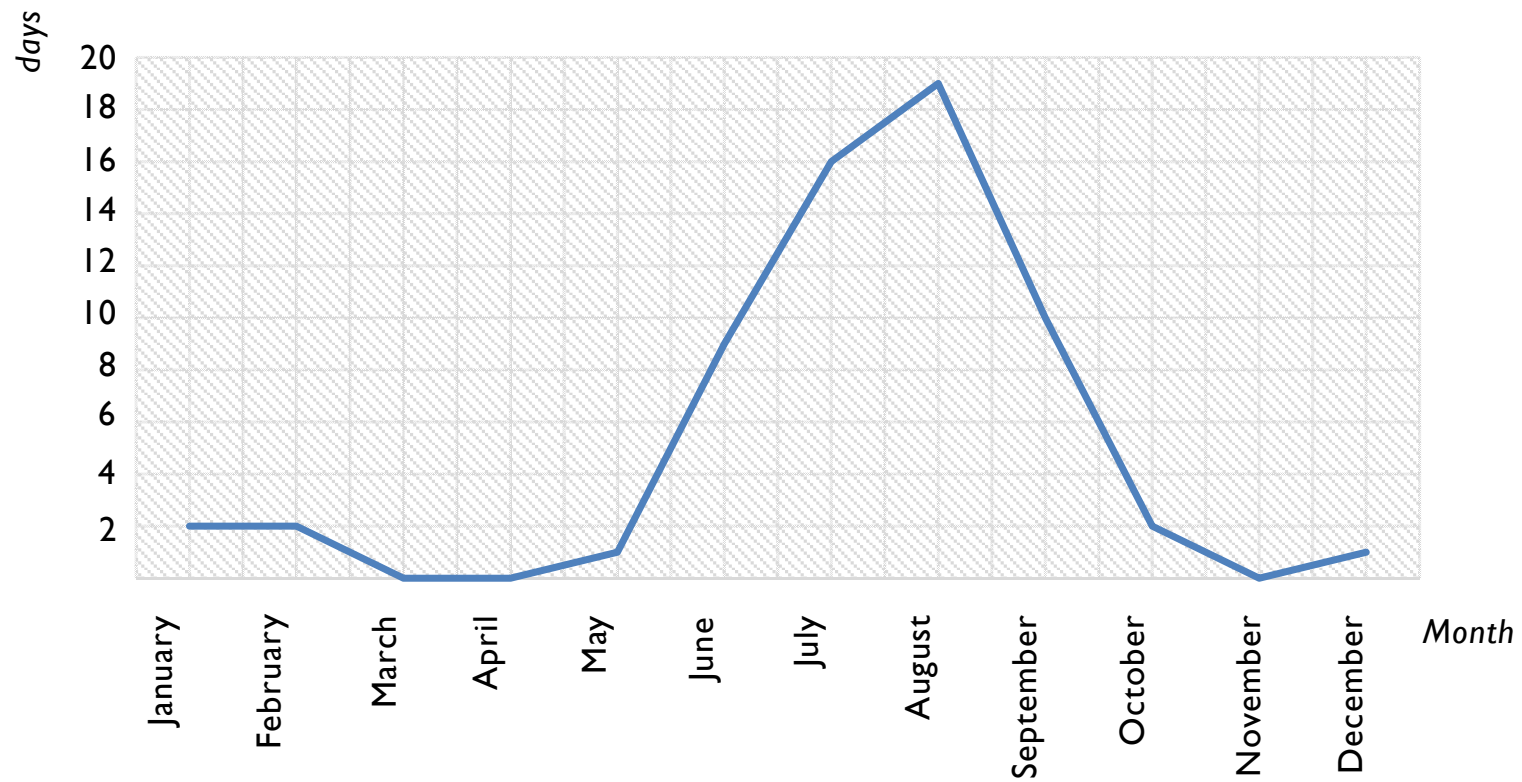
6. CLIMATIC STRATEGIES

RAIN WATER



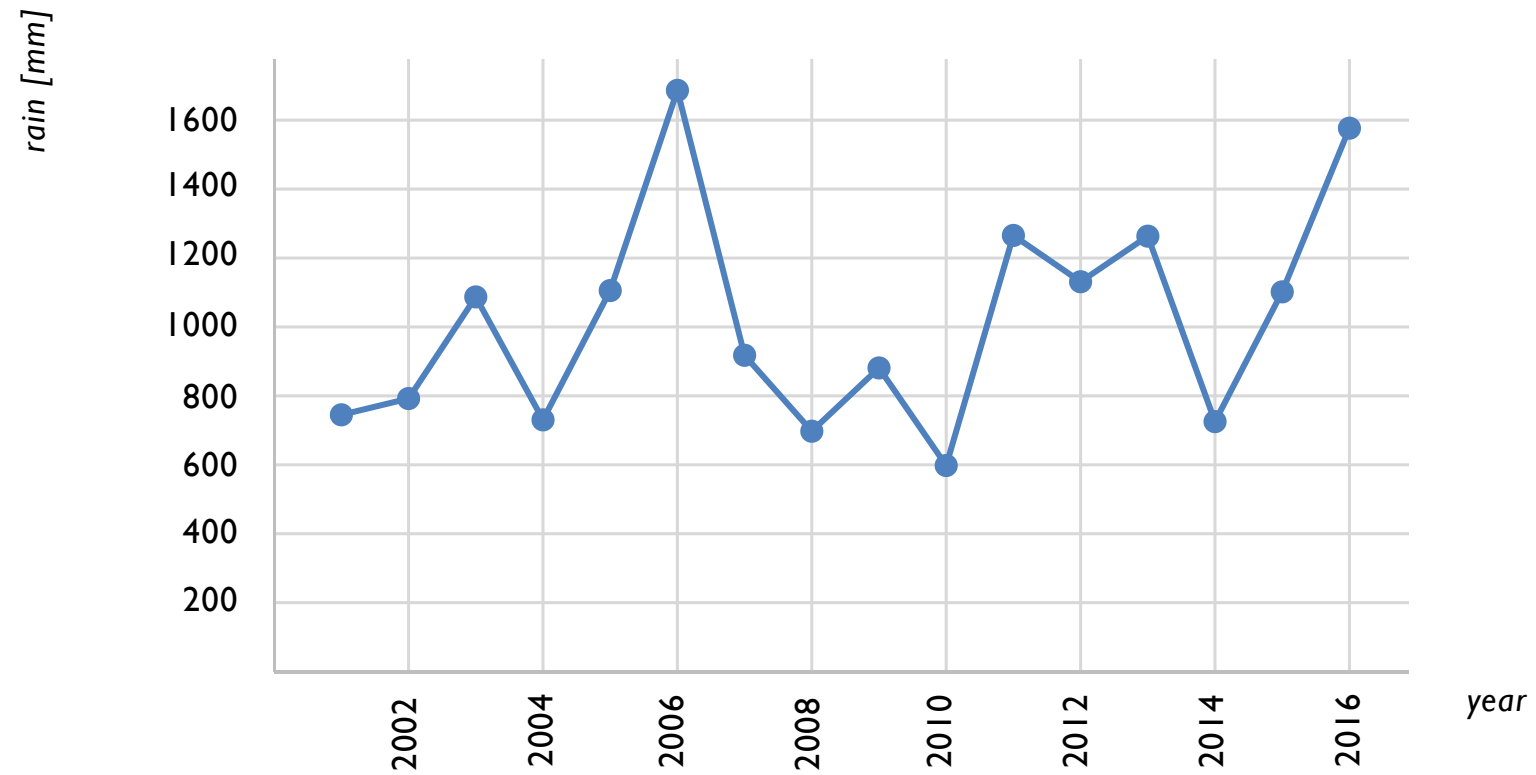
6. CLIMATIC STRATEGIES

AVERAGE DAYS WITH RAIN



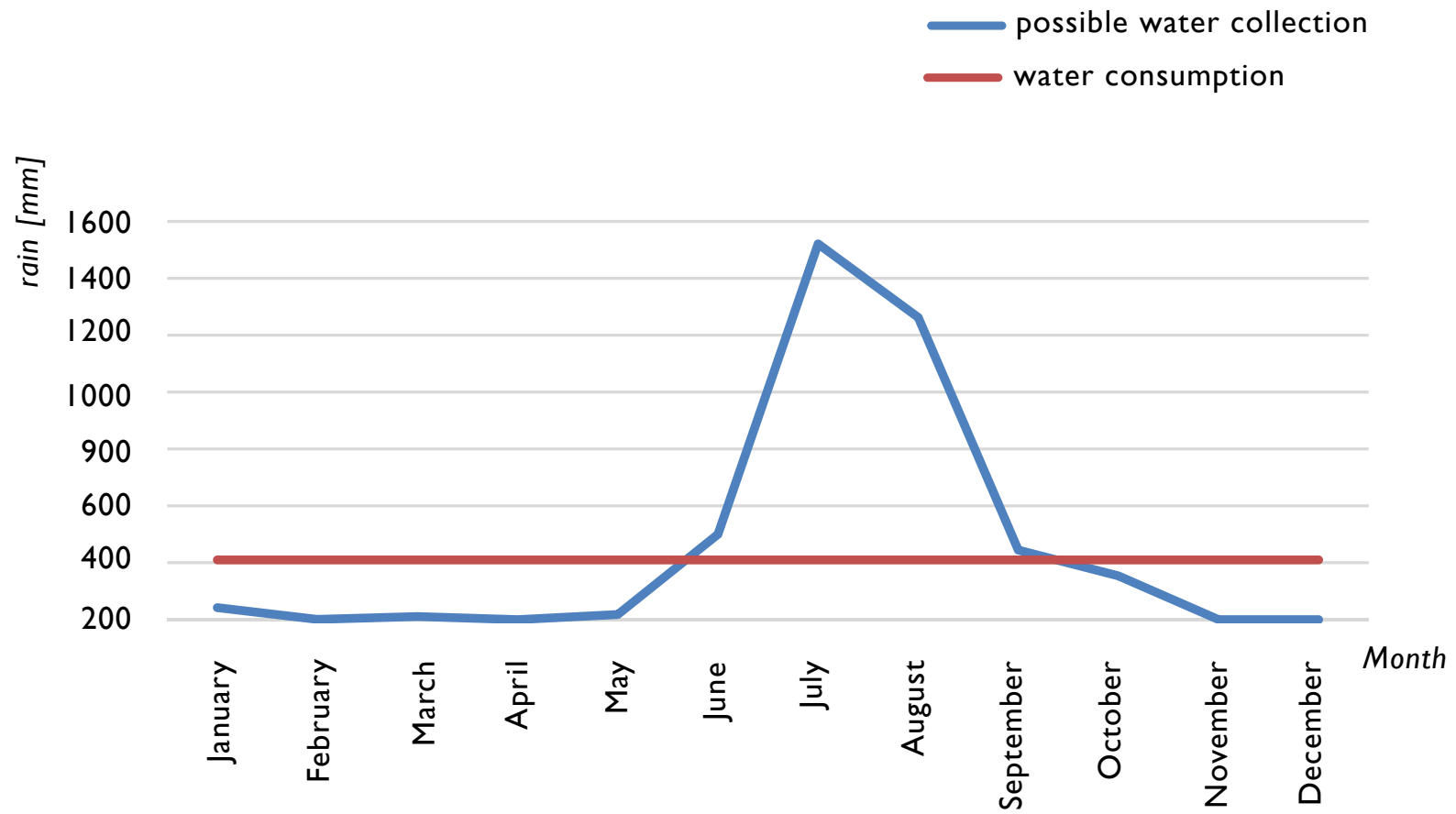
6. CLIMATIC STRATEGIES

RAINFALL YEAR



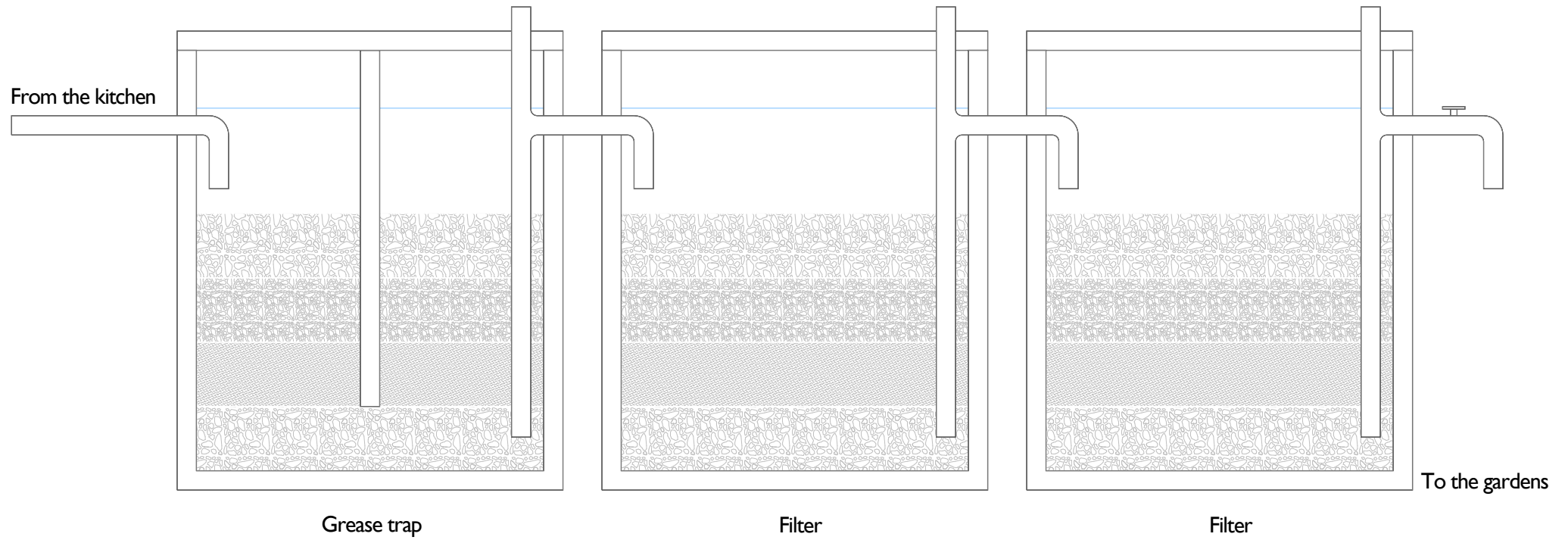
6. CLIMATIC STRATEGIES

WATER COLLECTION



6. CLIMATIC STRATEGIES

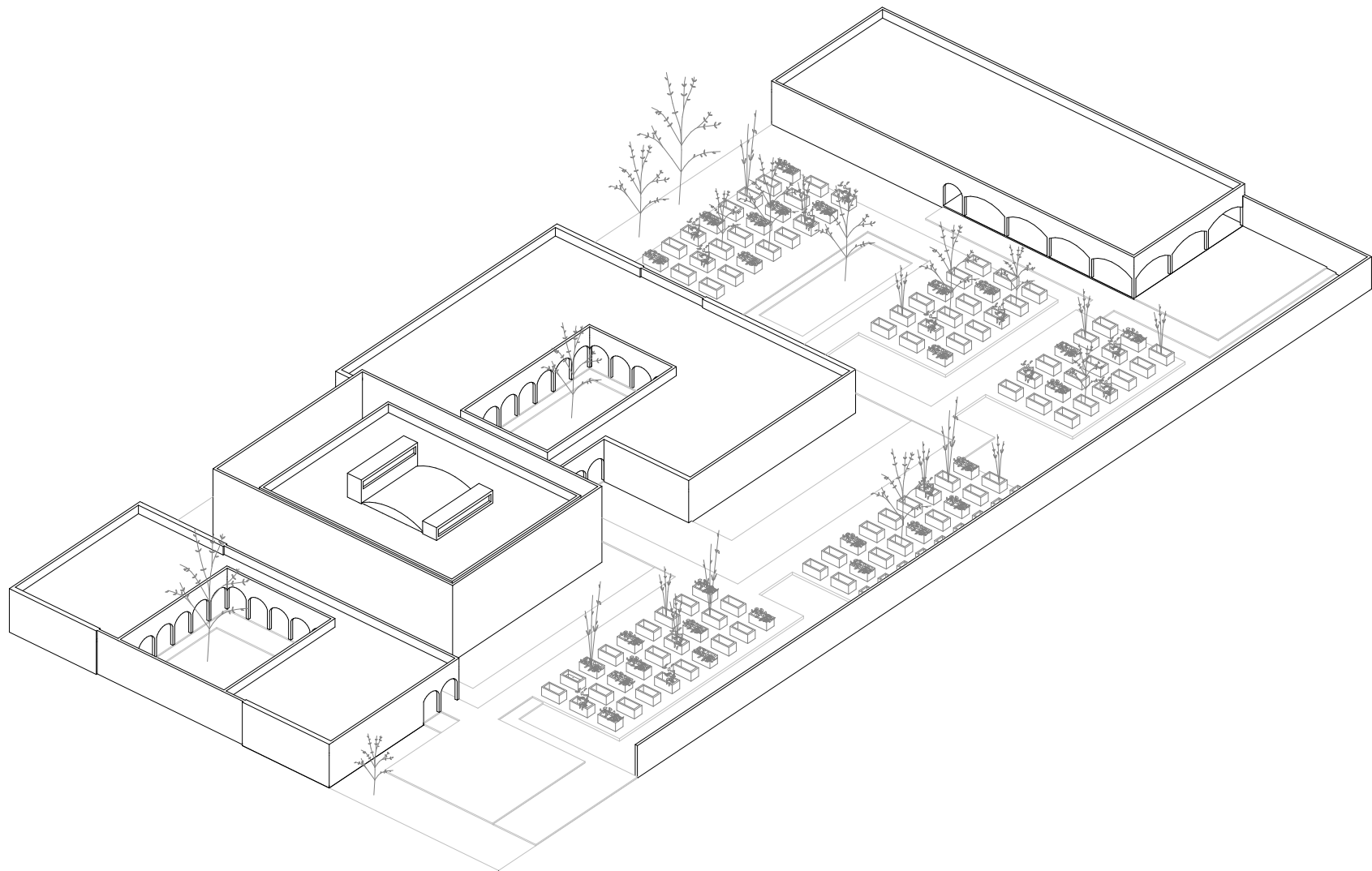
WATER



7. MODULARITY

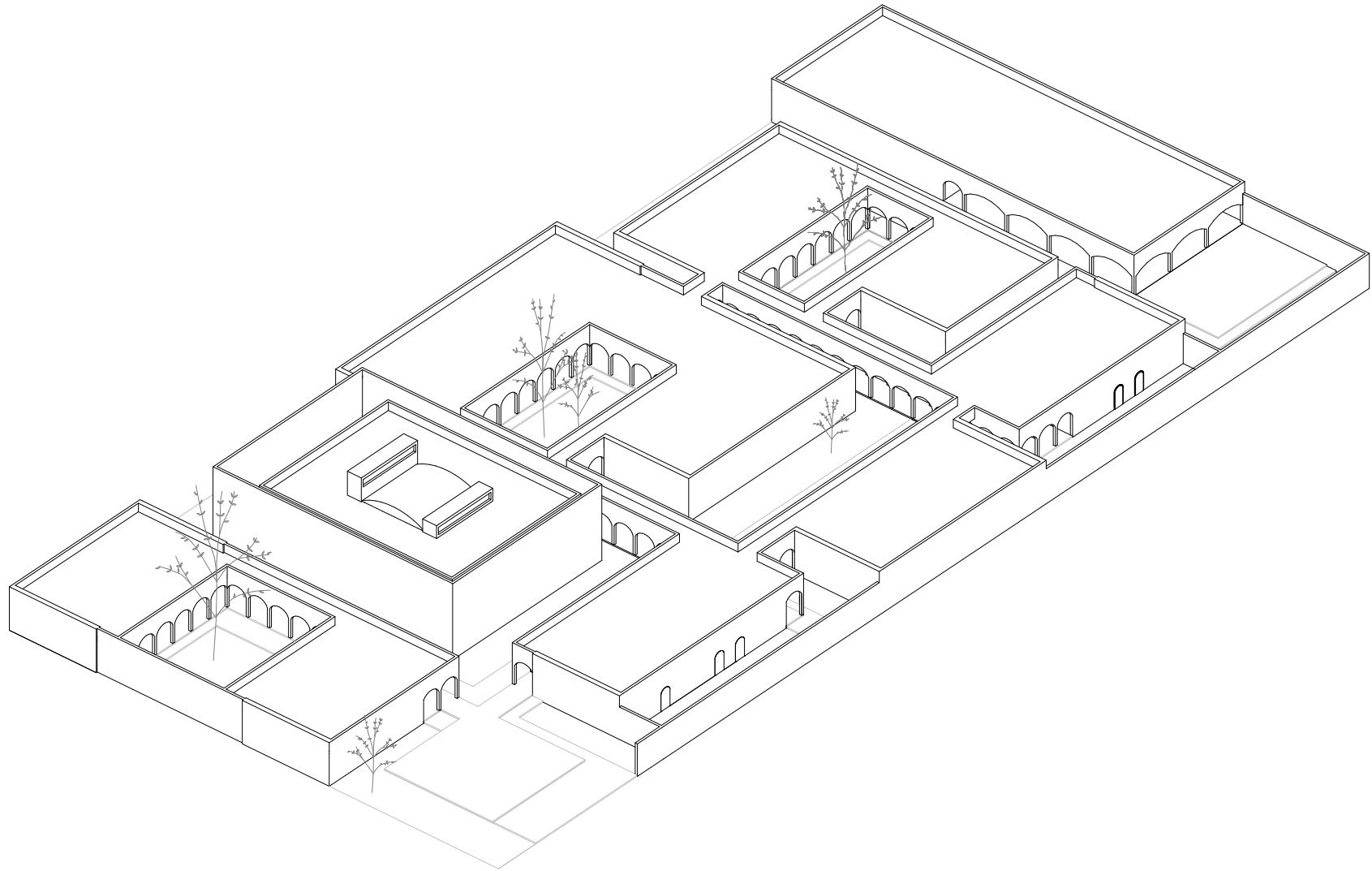
7. MODULARITY

PHASE I



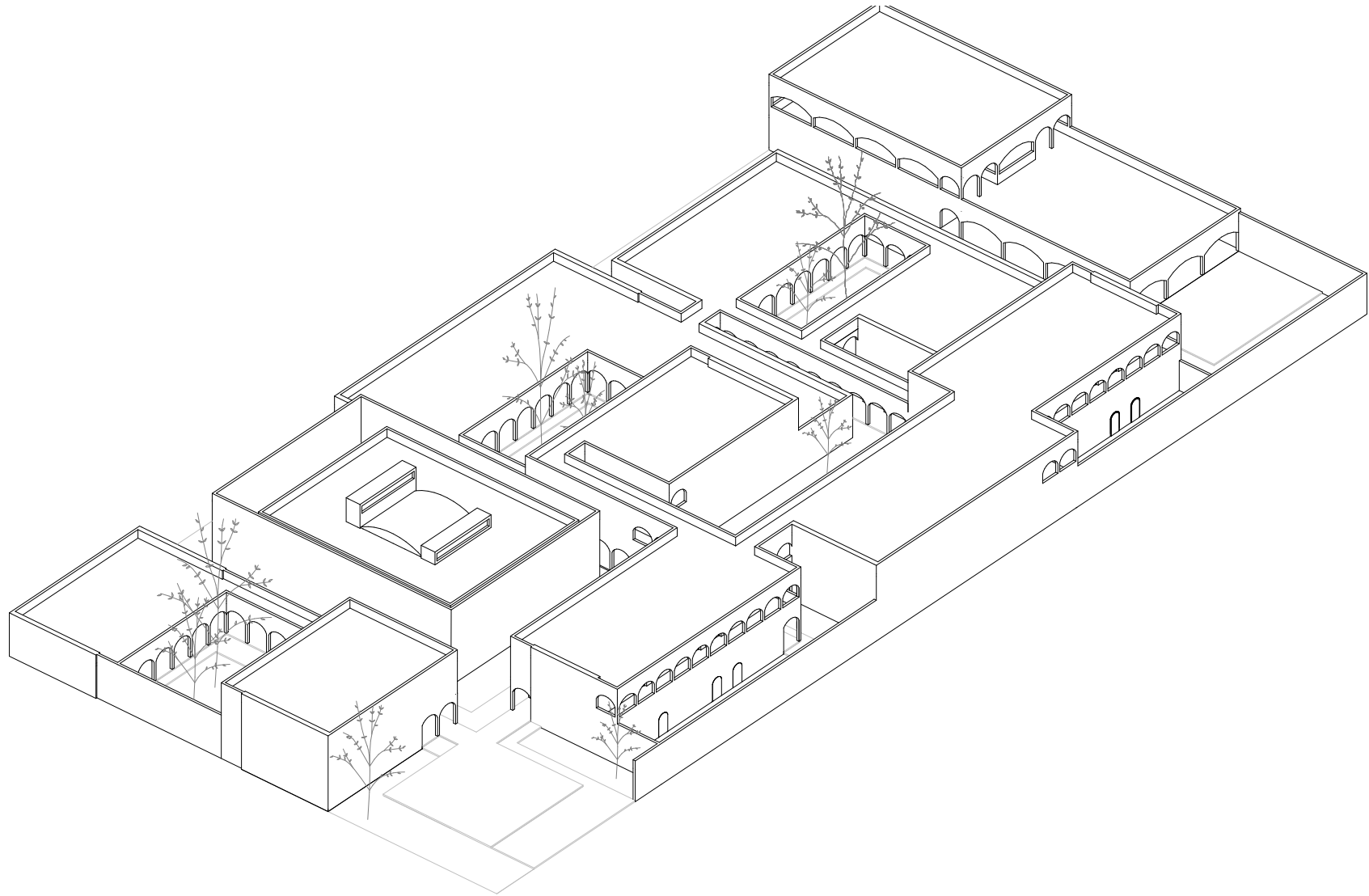
7. MODULARITY

PHASE 2



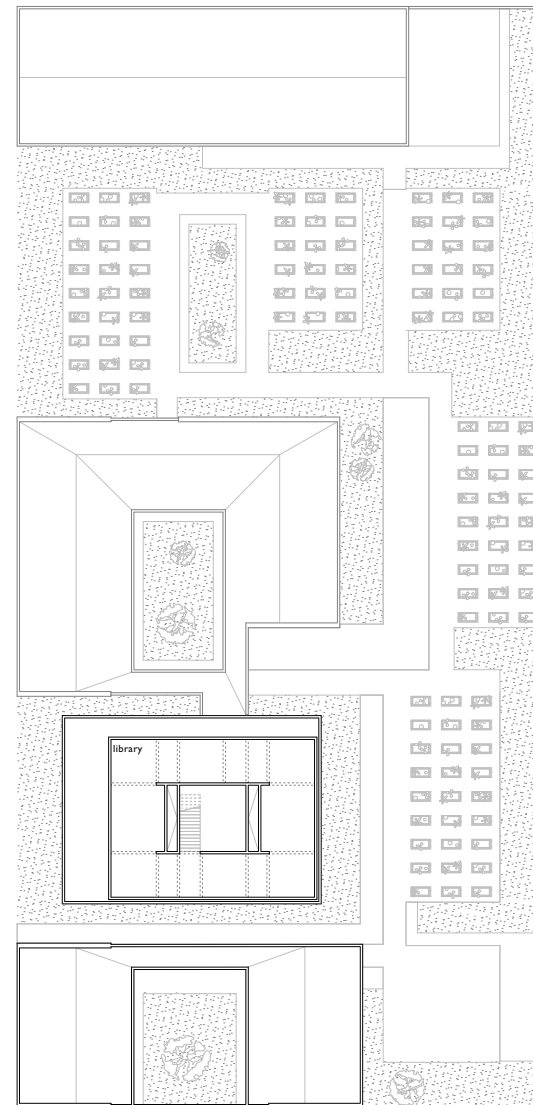
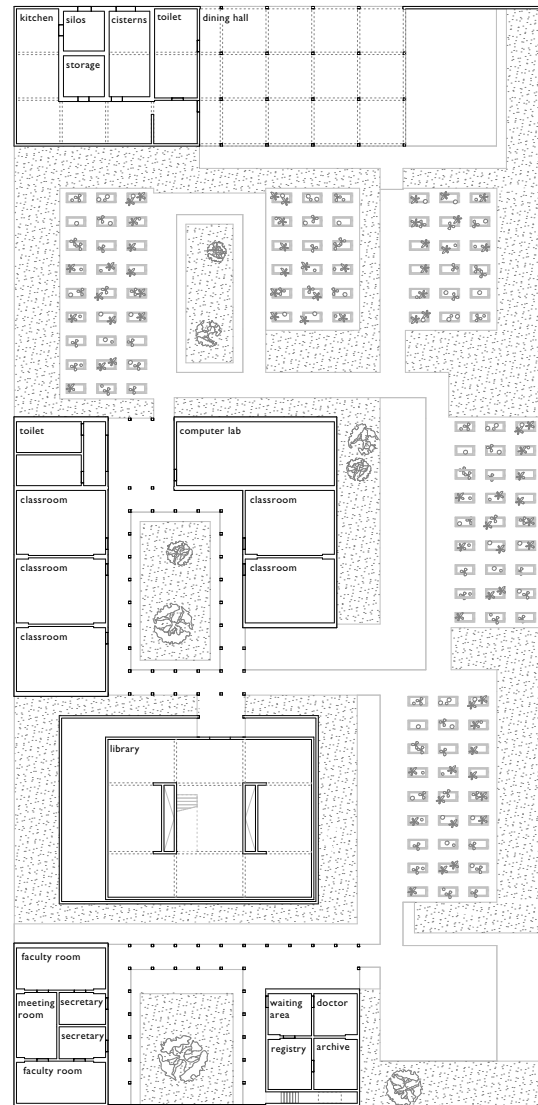
7. MODULARITY

PHASE 3



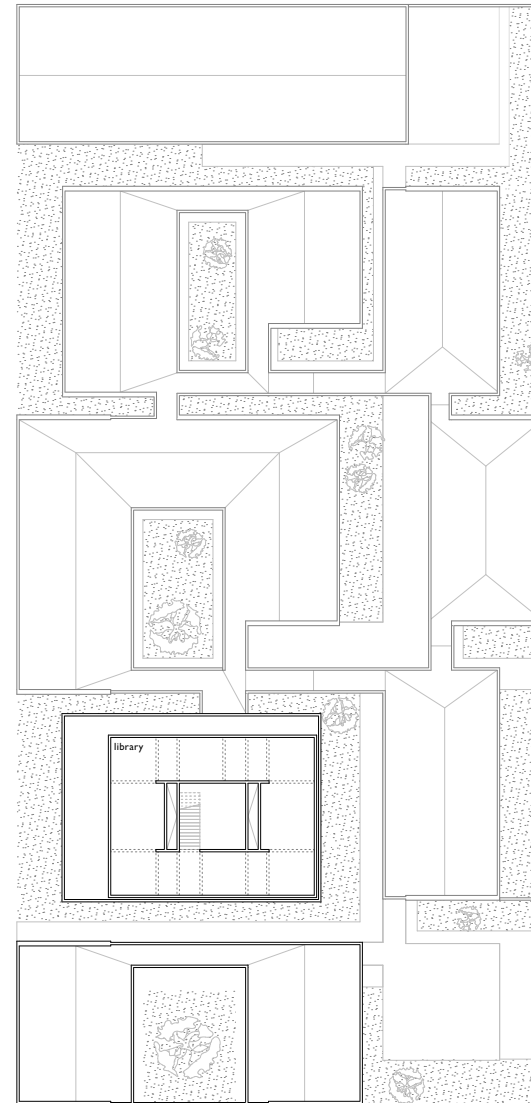
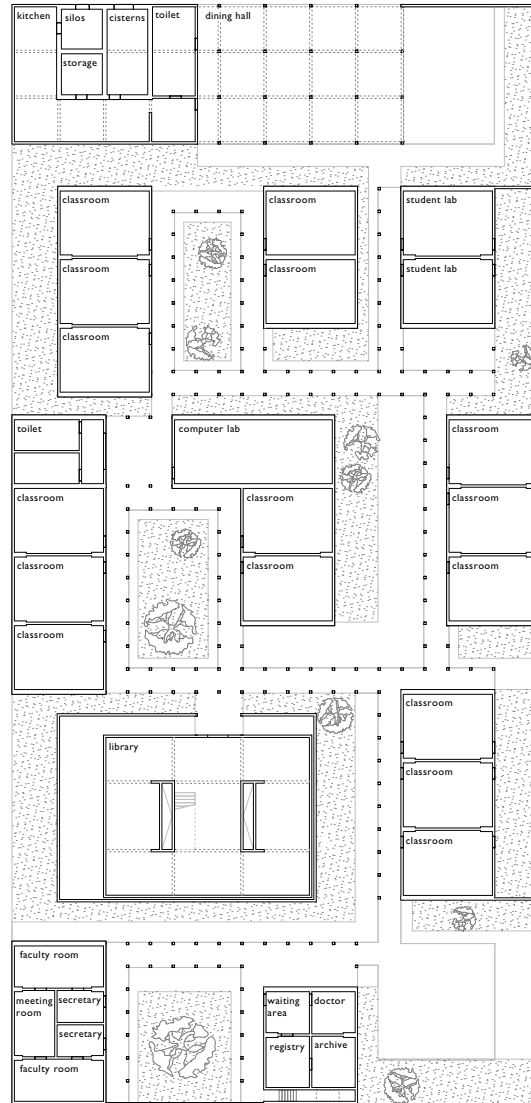
7. MODULARITY

PHASE I



7. MODULARITY

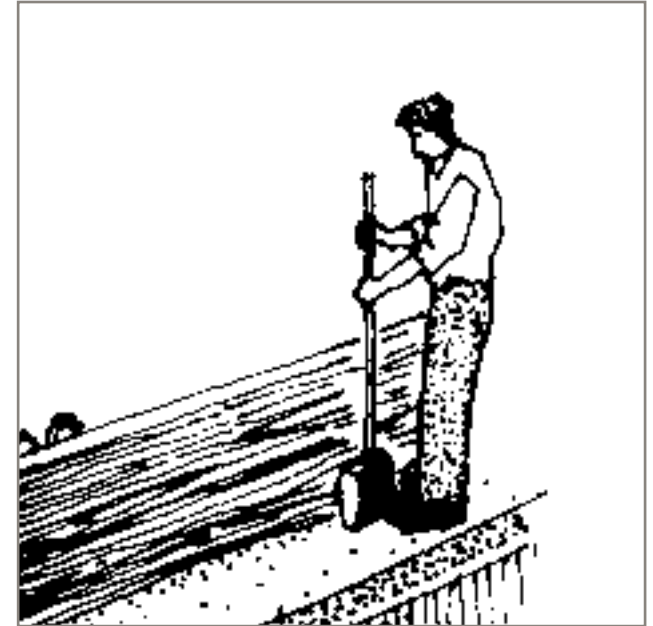
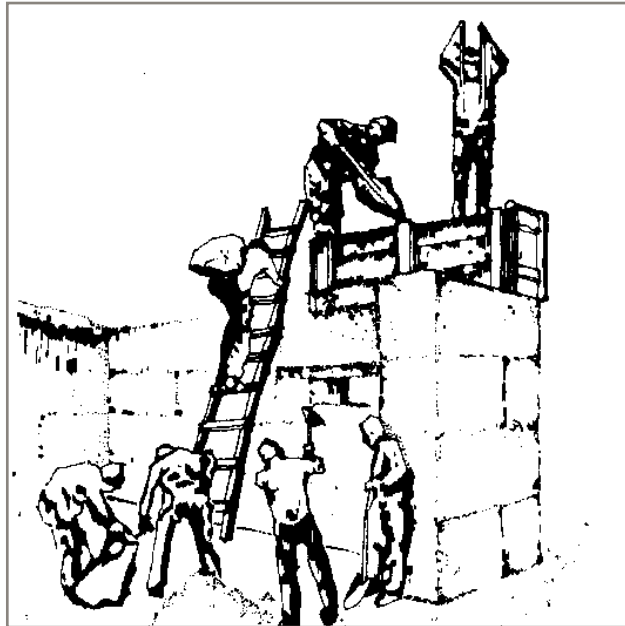
PHASE II



8. PARTICIPATION

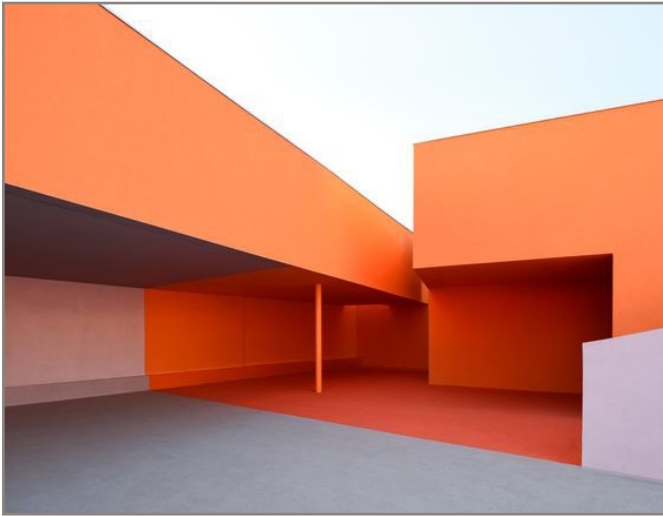
8. PARTICIPATION

CONSTRUCTION



8. PARTICIPATION

COLOUR CONCEPT



8. PARTICIPATION

COLOUR CONCEPT



Casa Rana - Made in Earth

THANK YOU



Classroom - Society of Pilar